

## How to Set the GPS Preferences in ArcPad

### Using ArcPad and the Trimble GeoExplorer XM/XH

These instructions are for a Geo XM, however they will work equally well with a Geo XH with only a few variations.

#### 1. Turn on the Unit

- Push the green power button on the bottom right.
- Using a stylus-not a pen as this will scratch the screen-tap the Start button on the top left of the screen, select ArcPad 7.1.1 by tapping on it once. It may take a few moments for the program to open.

#### 2. Open Preferences

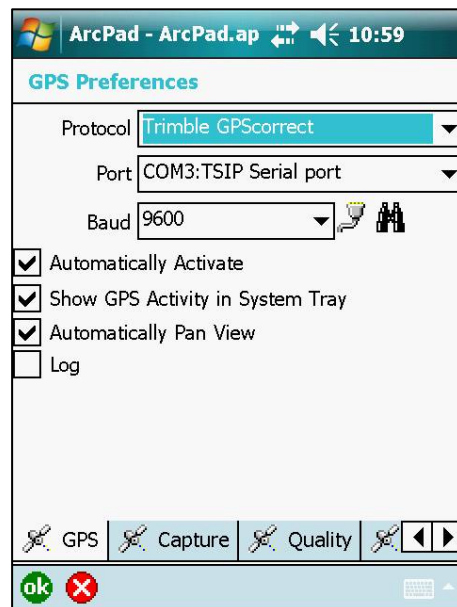
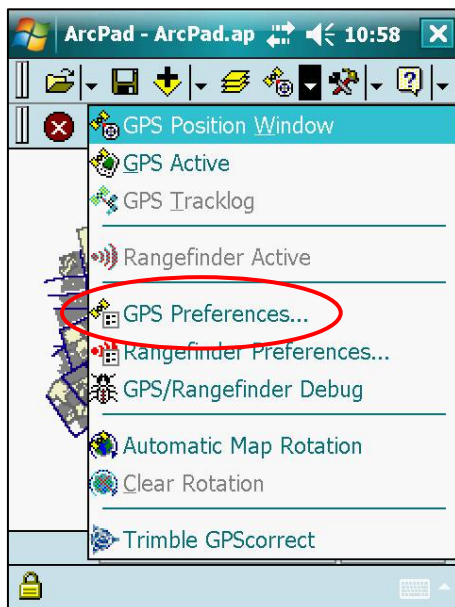
- Click on the black down arrow to the right of the button that has an image of a satellite on it.



#### 3. Set GPS Preferences

Select **GPS Preferences** from the drop-down menu.

The **GPS Preferences** window will open with several tabs starting with **GPS** along the bottom for the different preference categories. The settings outlined in the following instructions are standard or average settings.



4. **The Setting Categories (Tabs)** (see screen shot on previous page)

a. **GPS**

Protocol: Trimble GPSCorrect (or TSIP GPSCorrect)

Port: COM3:TSIP Serial Port

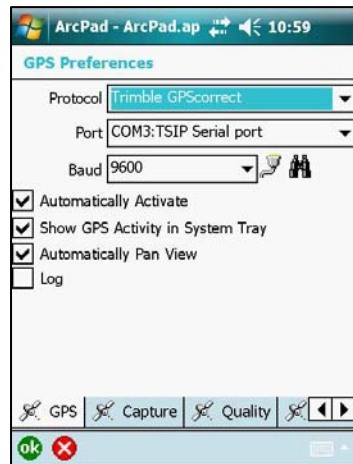
Baud: 9600

Check: Automatically Activate

Show GPS Activity in System Tray

Automatically Pan View

Uncheck: Log



b. **Capture** (The Capture settings can be adjusted according the level of accuracy desired and the speed at which you want to work.)

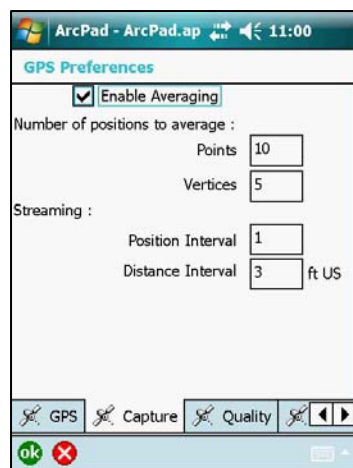
Check: Enable Averaging

Number of positions to average: Points: 10 (typical for point survey/ trees)

Vertices: 5

Streaming: Position Interval (how often readings are taken in seconds):1 (typical)

Distance Interval (how often readings are taken if you are mapping a line/ trail in feet or meters): 3 ft US (ok if in meters)

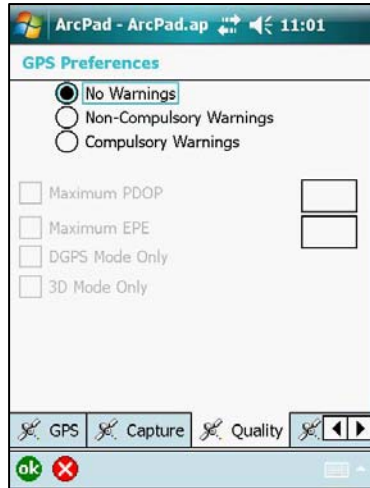


**c. Quality**

Select: No Warnings

De-select: Non-Compulsory Warnings

Compulsory Warnings



**d. GPS Height**

Antenna Height: 3ft if you are not using one. 6ft if you are using an antenna.

1 or 3 in meters is ok.

Geoid Separation: 0ft or m

Check: Use Map Units for Height

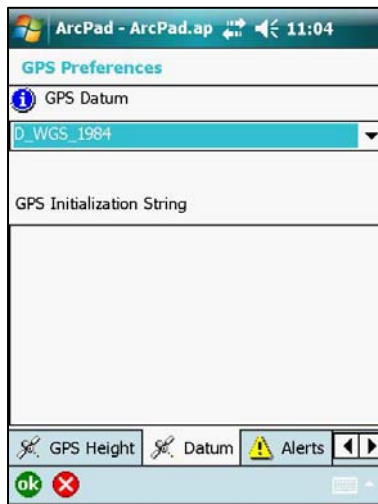
Height Units: box will default to *Meter : m*

Uncheck: Use Height In Datum Transfer



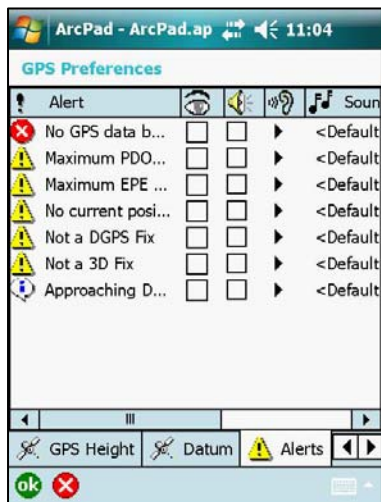
**e. Datum**

GPS Datum: leave at the default selection



**f. Alerts**

Uncheck all the boxes. This will turn off the auditory alerts and pop-ups associated with warnings.



**g. Location**

Last Known GPS Location: Do not need to change anything. Leave as is.

Check: Restore Location

DST Distance Alert: Leave blank as is.

