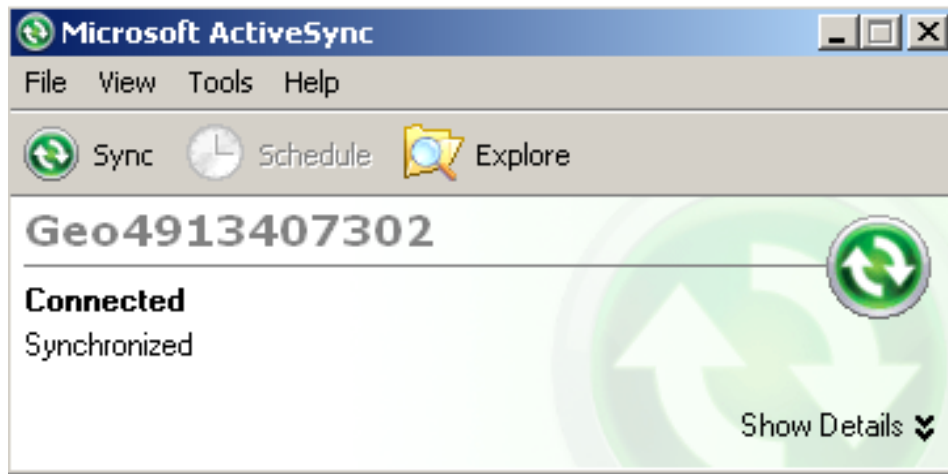
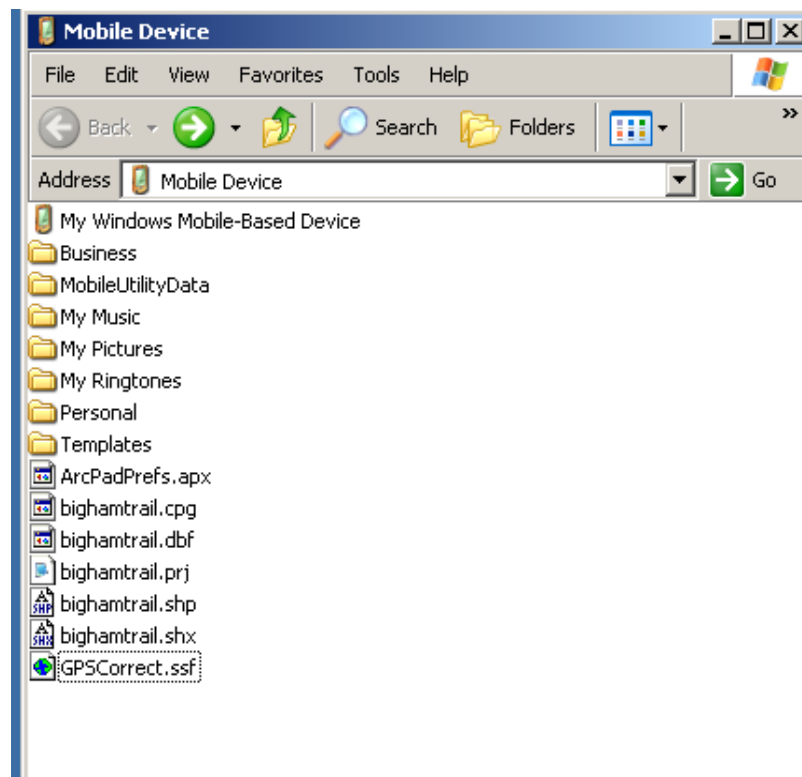


How to Input and Correct GPS-Collected Data

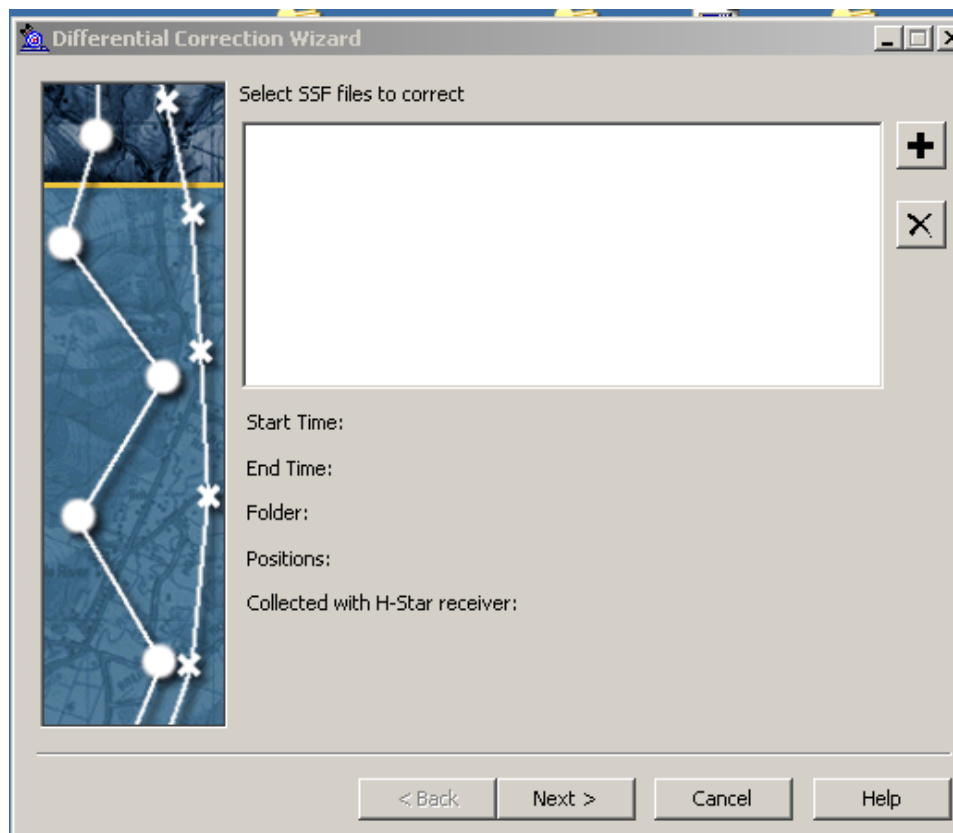
1. Connect the GPS unit to the cradle.
2. Select the explore icon to search for the files you want to correct.



3. Create a temporary folder on the desktop. Copy the files you want to correct as well as the GPSCorrect.ssf file into the temporary folder on the thdesktop. If there is more than one .ssf file and you suspect it was created as part of your current work, then bring that one into the temporary file as well.

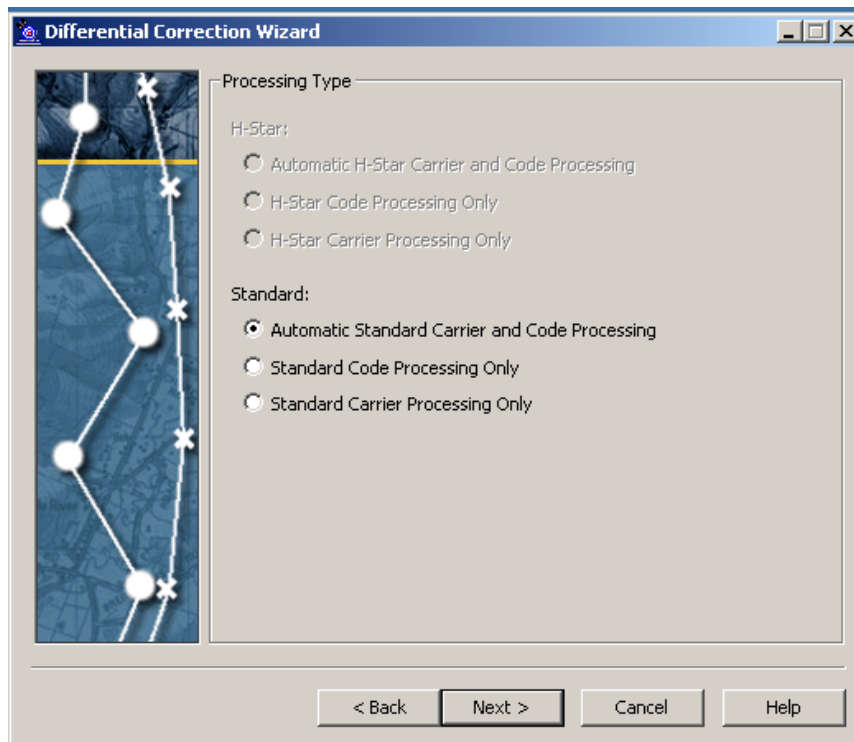


4. Tap Start>All programs>GPS Pathfinder Office>Differential Correction

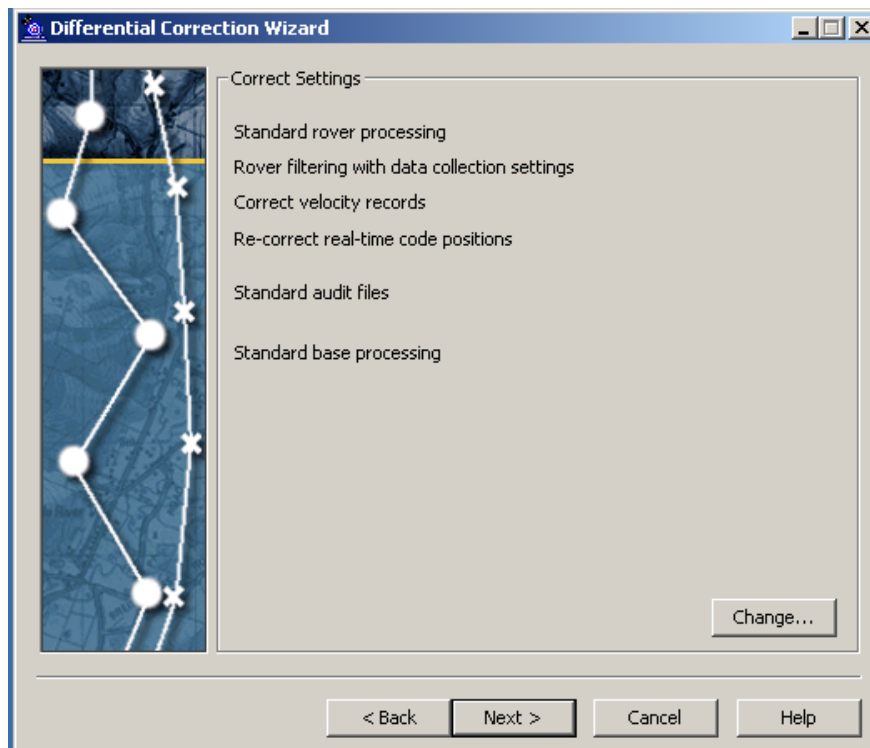


5. After you open differential correction wizard, select SSF file(s) to correct from the temporary folder you created using the plus sign button. Click Next.

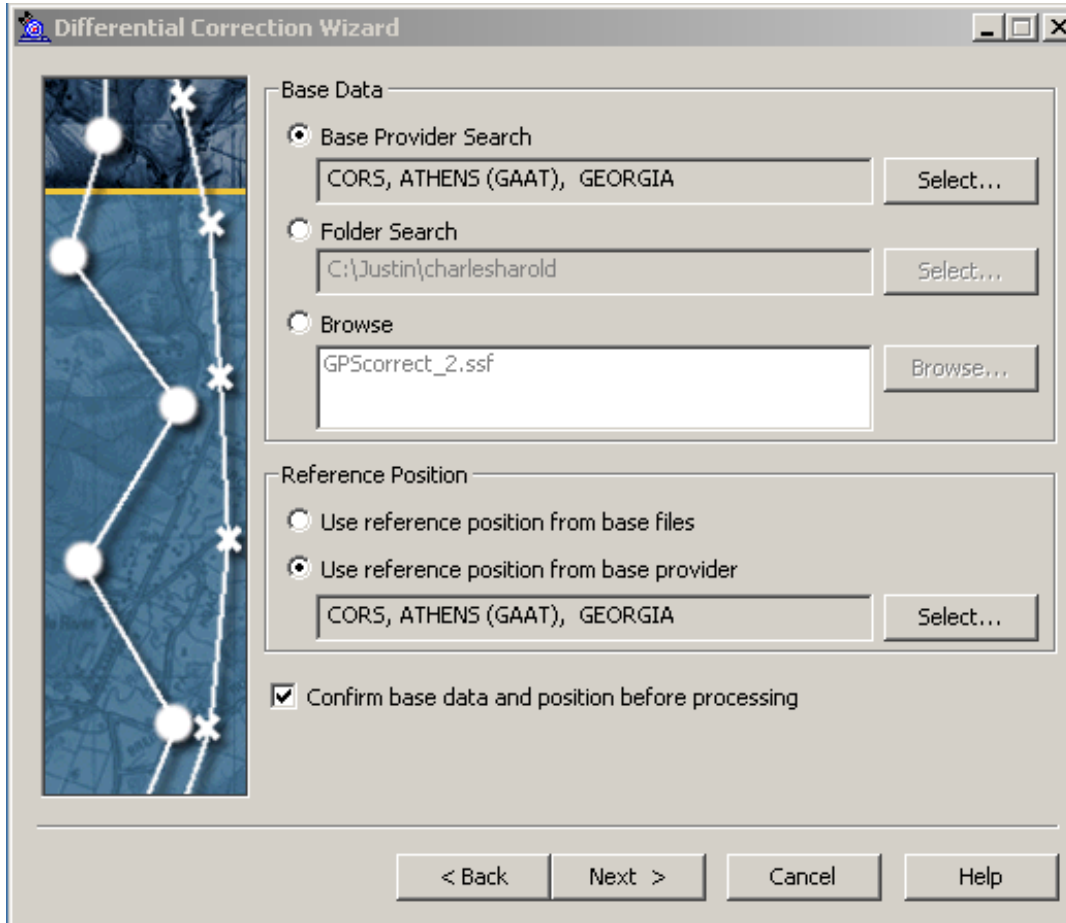
6. Make sure the Processing type selected is “Automatic Standard Carrier and Code Processing” (or H-Star, if coming from a GeoXH). Click Next.



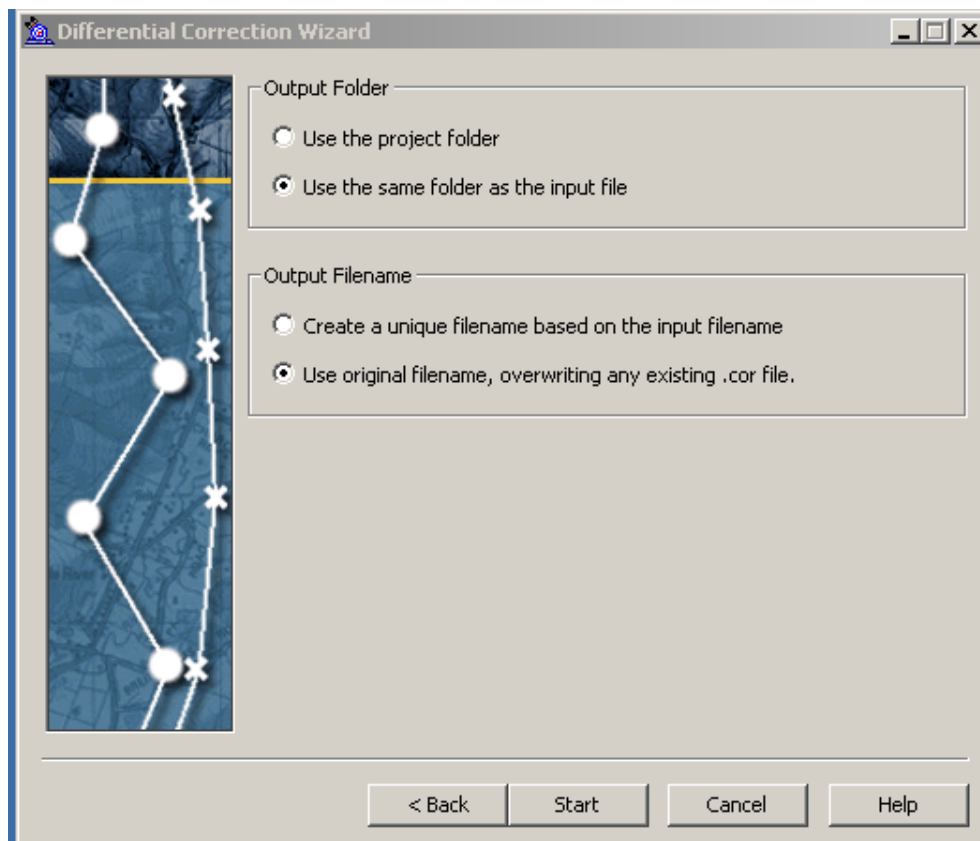
7. A window with the correct settings will appear. These are the default settings, leave them as such. Click Next.



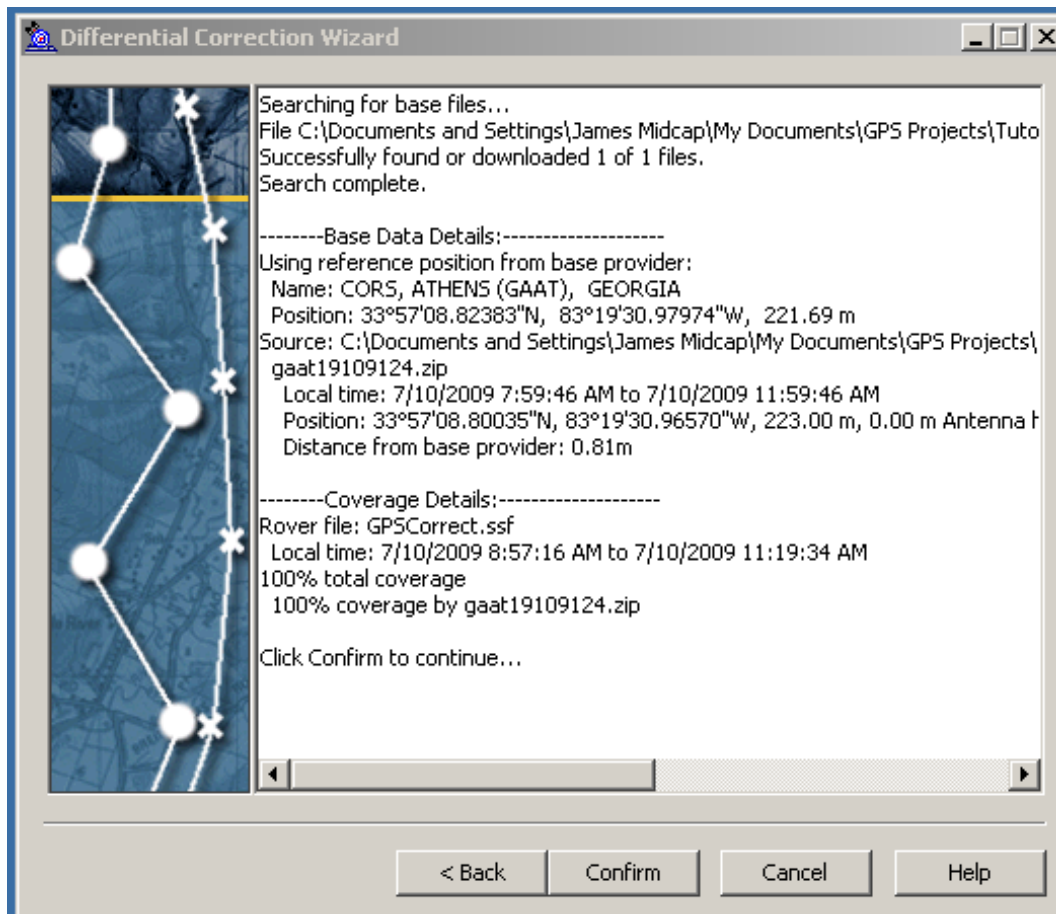
8. A window with “Base Data” and “Reference Position” will appear. Differential Correction Wizard will automatically choose the closest base provider for you, or you can choose the closest base provider to where you did your work. Click “Use reference position from base provider.” Check the box “confirm base data and position before processing.” Click Next.



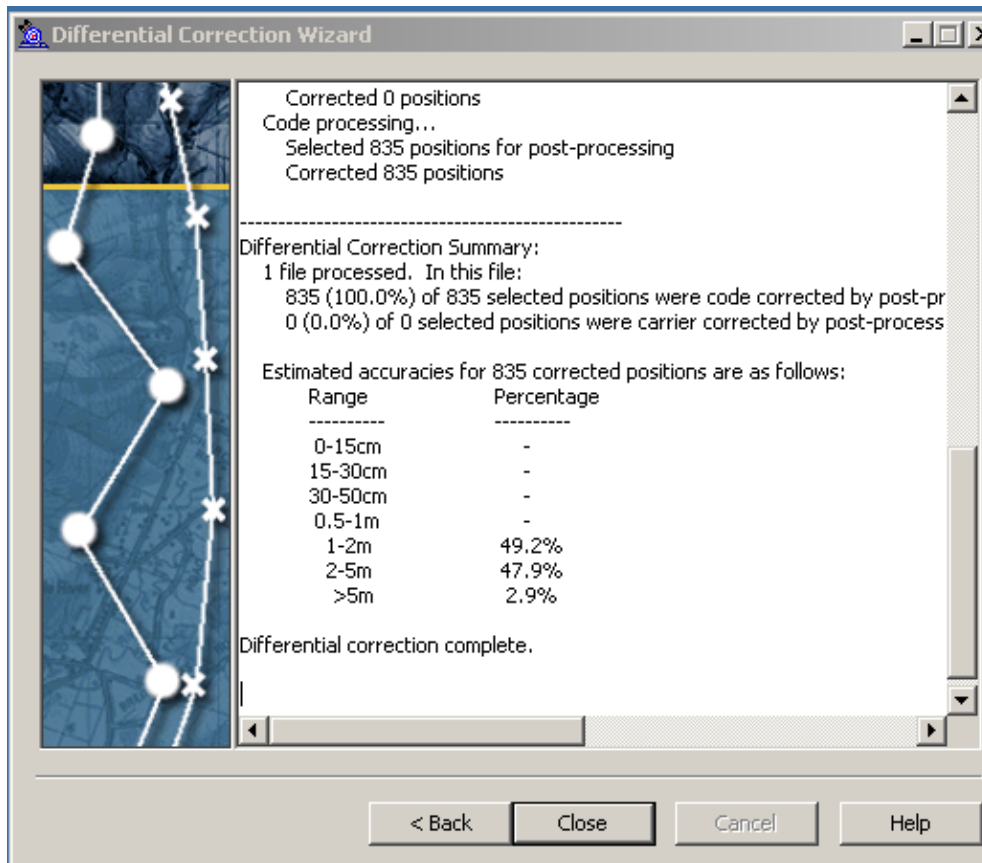
9. A window with “Output Folder” and “Output Filename” will appear. Select “Use the same folder as the input file” and “Use original filename, overwriting any existing .cor file.” Click Start.



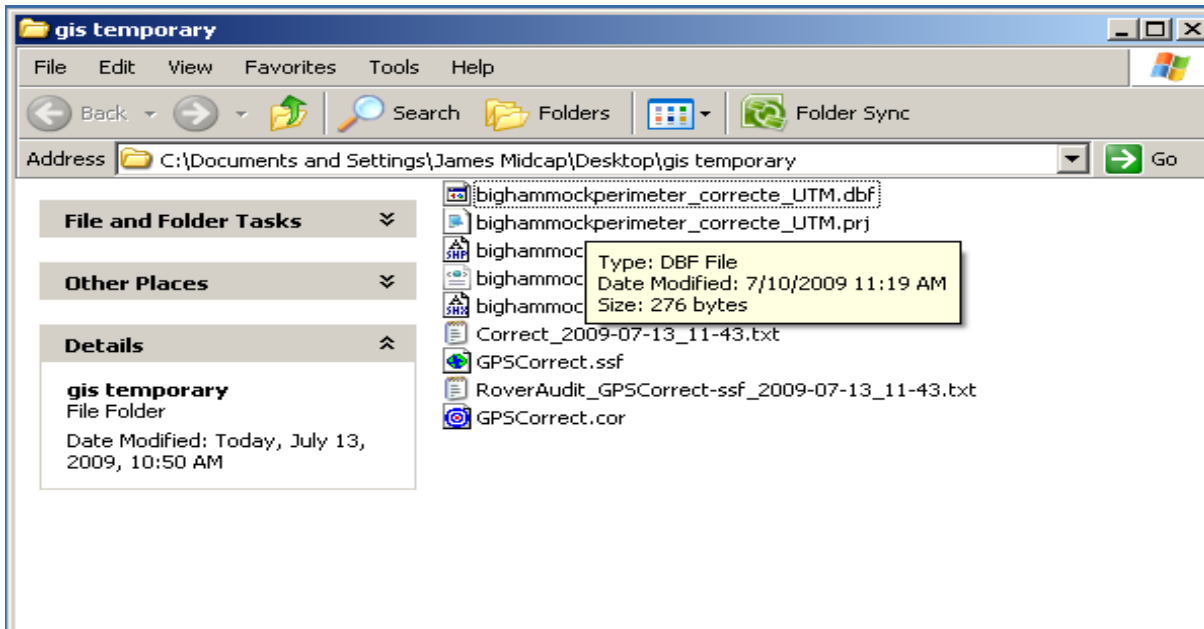
10. Click Confirm.



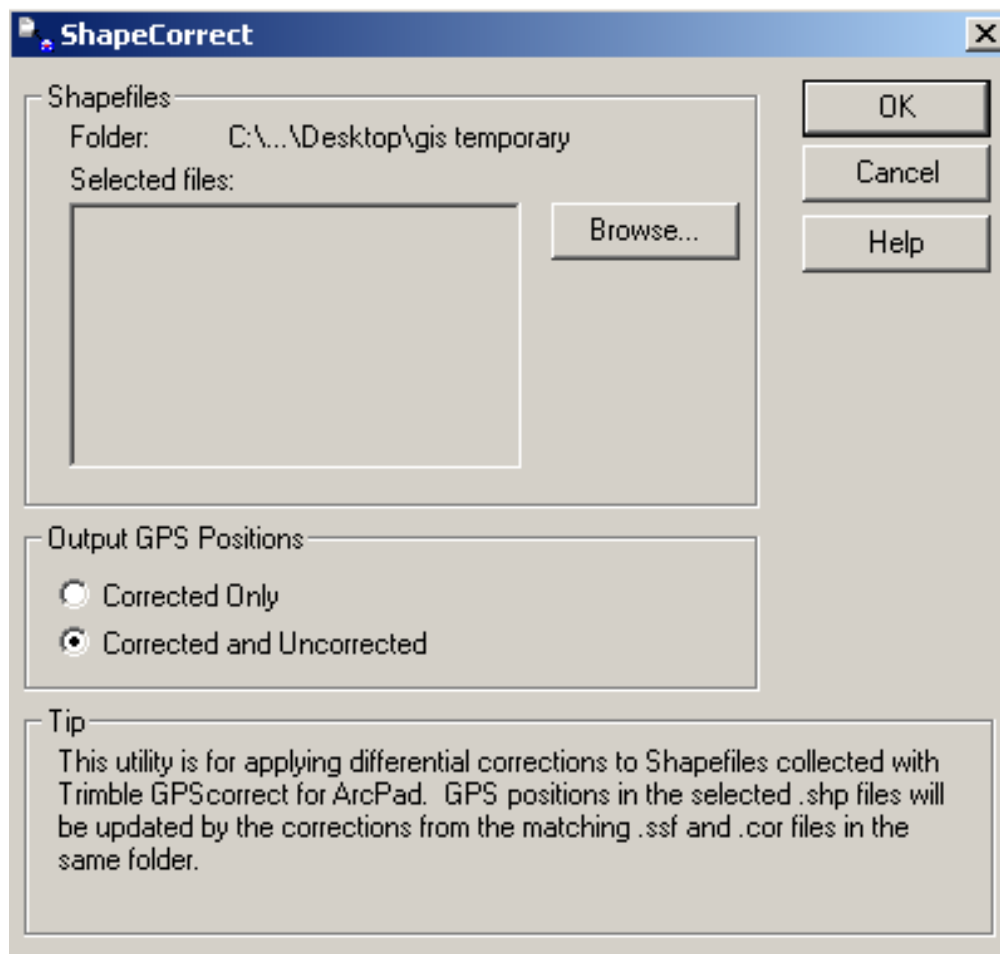
11. Differential Correction Wizard will show you a report that the correction is complete. This is a positive report. If you do not see a report like this then try another base station. If you still do not get a positive report, your .ssf file may be corrupted or incomplete. Click close.



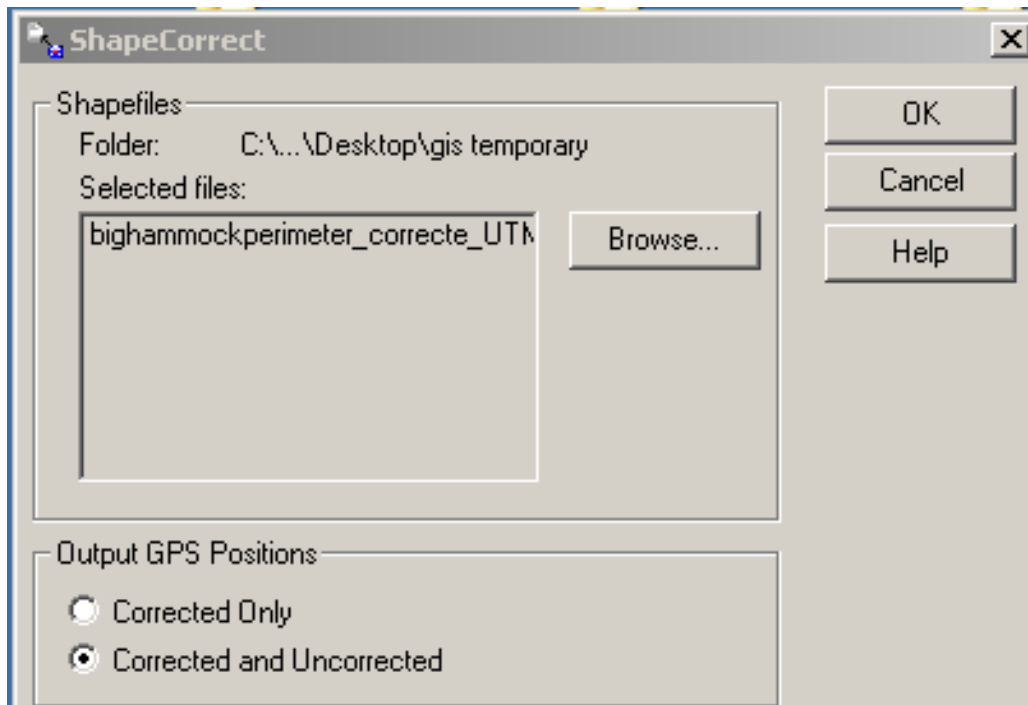
12. Open the temporary folder you created on the desktop. Three new files have been created and will appear at the bottom of the file list (GPSCorrect.cor, RoverAudit file, and a dated Correct file). You will now use the GPSCorrect.cor file to correct your shapefile using the tool, "ShapeCorrect."



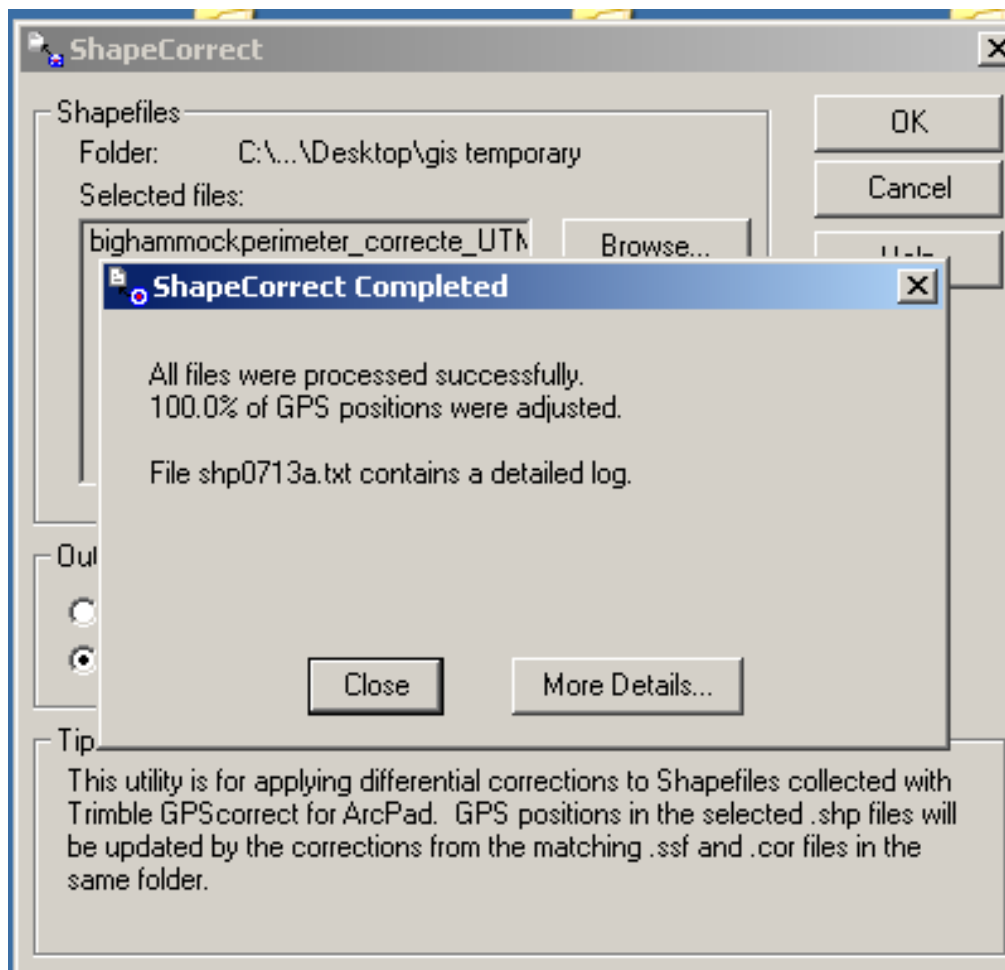
13. Open ShapeCorrect



14. Browse and select the shapefile you wish to correct from the temporary folder you created. For Output GPS Positions, select "Corrected and Uncorrected." Click OK.



15. A window will appear that tells lets you know your correction is complete. Click Close.



16. Move your corrected file from the temporary folder to a more permanent folder.

- 17.** In order to improve file management and prevent a potentially dreadful event, we recommend that you open ArcCatalog and rename your corrected file.
- 18.** We recommend that you delete the text files that were created during the correction process from the computer. (Such as GPSCorrect.cor, RoverAudit files, and text files.) Leave the .bkp file and your corrected file(s).