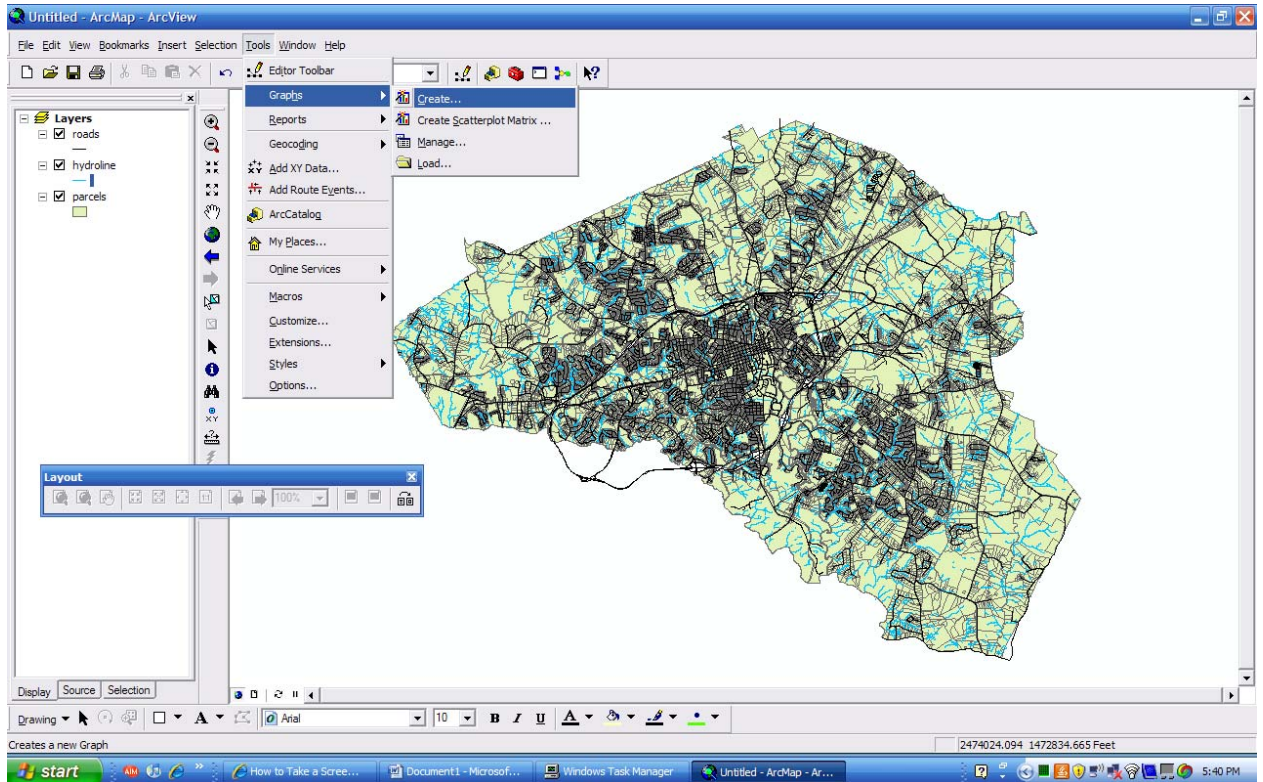
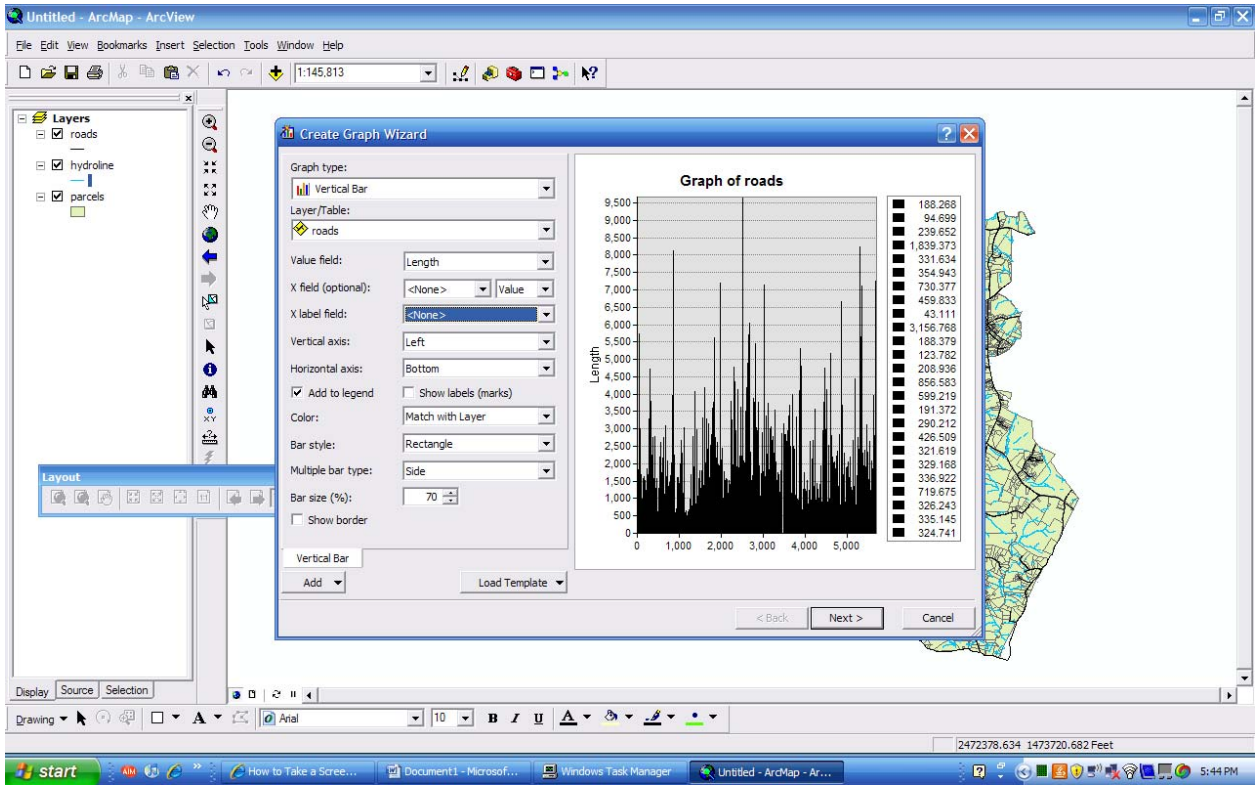


How to Create a Chart/Graph in ArcMap

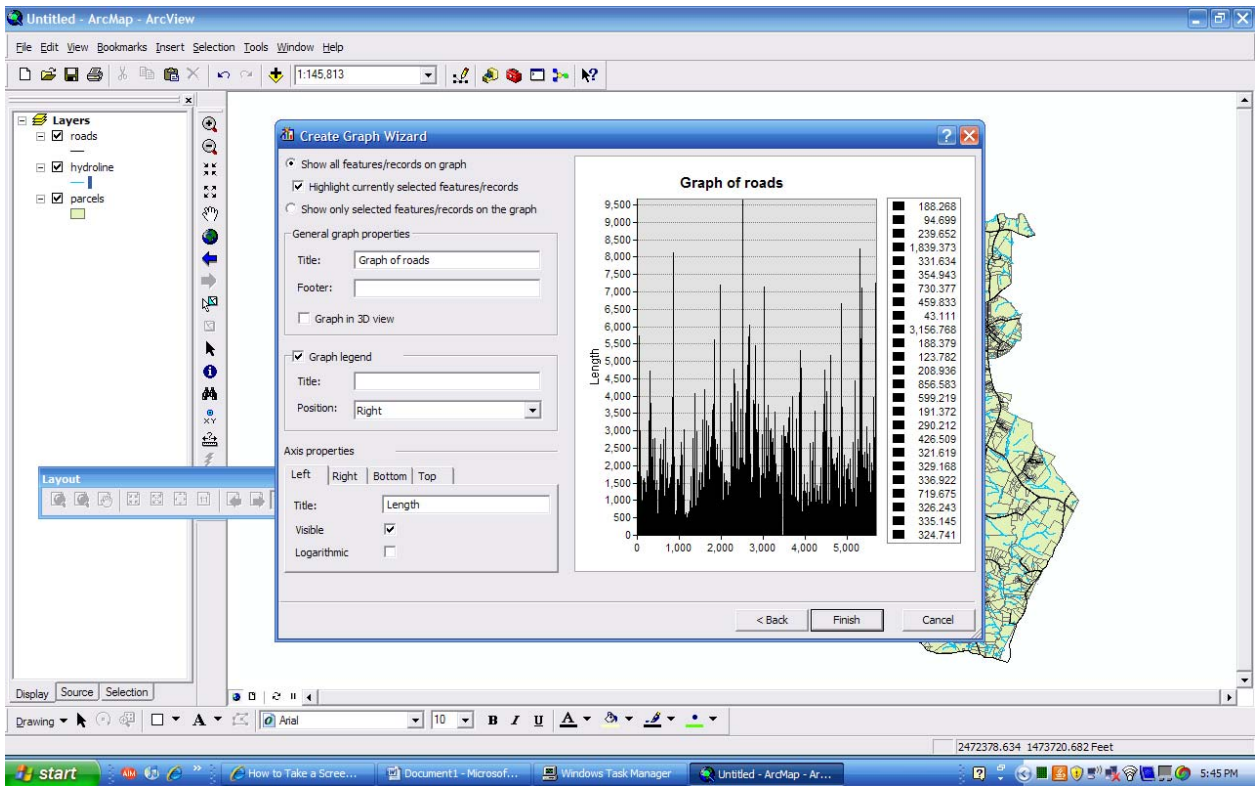
1. Open ArcMap
2. Insert shapefiles or create a map
3. Click tools>Graphs>Create



4. Choose the graph type, the layer you want depicted on the graph, and the value field (selects option from attribute table of that layer)

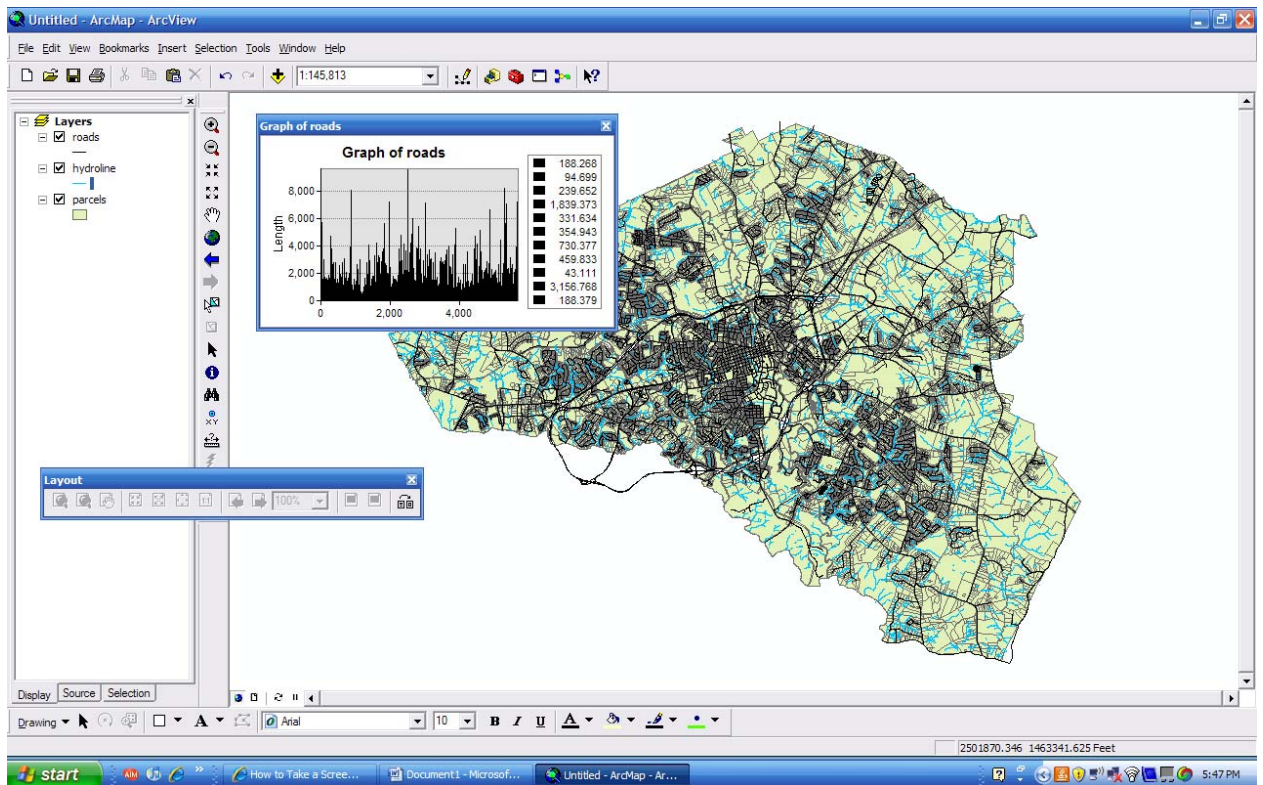


5. Click Next
6. Edit the Title, Footer, Graph legend, and Axis properties



7. Click Finish

8. Move chart or adjust size and you're finished



*Notes

- Best if used to compare data (tree height, evaporation levels, etc.)
- Can edit the chart after inserting it by double clicking on it
- Used the University of Texas website of Water Resources to learn the steps
<http://www.crwr.utexas.edu/gis/gishydro04/Introduction/Exercises/Ex1.htm#Six>