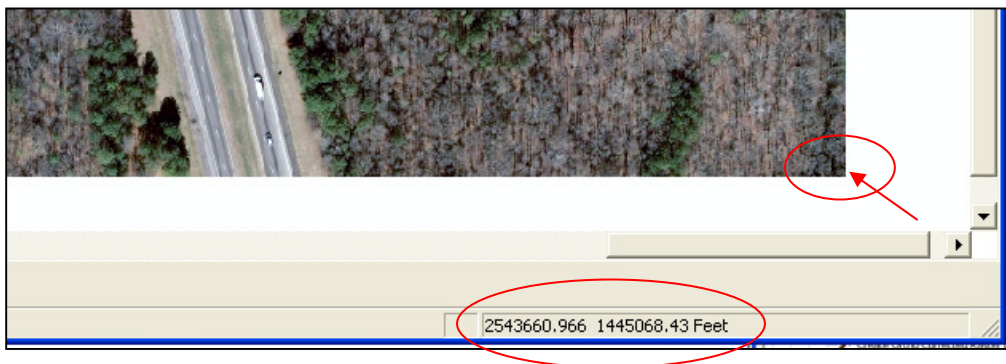


How to Clip and/ or Convert a Raster Image in ArcMap

(this is very useful if you are given a large *.sid* file and need a jpeg of a smaller area for use in programs that do not read *.sid* files)

1. Open your image in ArcMap

If your image is not georeferenced, or if you want a smaller portion of a larger referenced image, you will need to get some X and Y coordinates prior to the next step. Placing your cursor over the upper left and lower right corners of the area you want clipped. Write down the coordinates displayed in the lower right hand corner of the screen. Zoom in to the corners you want for more accuracy. The upper left hand corner will give you the *min x* and *max y*, and the lower right hand corner will give you *max x* and *min y*.



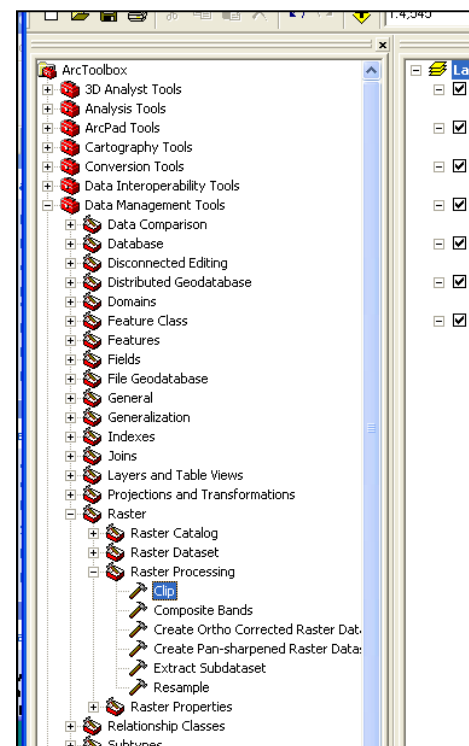
2. In ArcMap, open the ArcToolbox (red toolbox)

3. Click the "+" next to "Data Management Tools"

Click the "+" next to "Raster"

Click the "+" next to "Raster Processing"

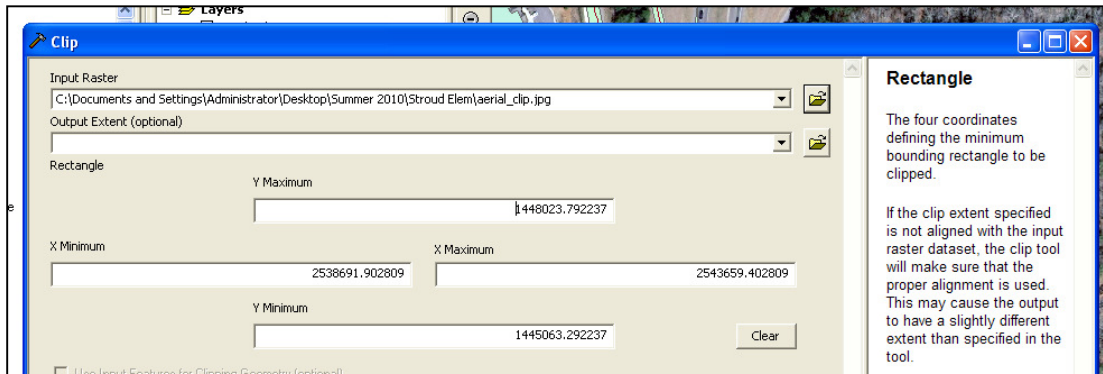
Double click "Clip"



4. In the Clip dialog box, browse to the input raster location.

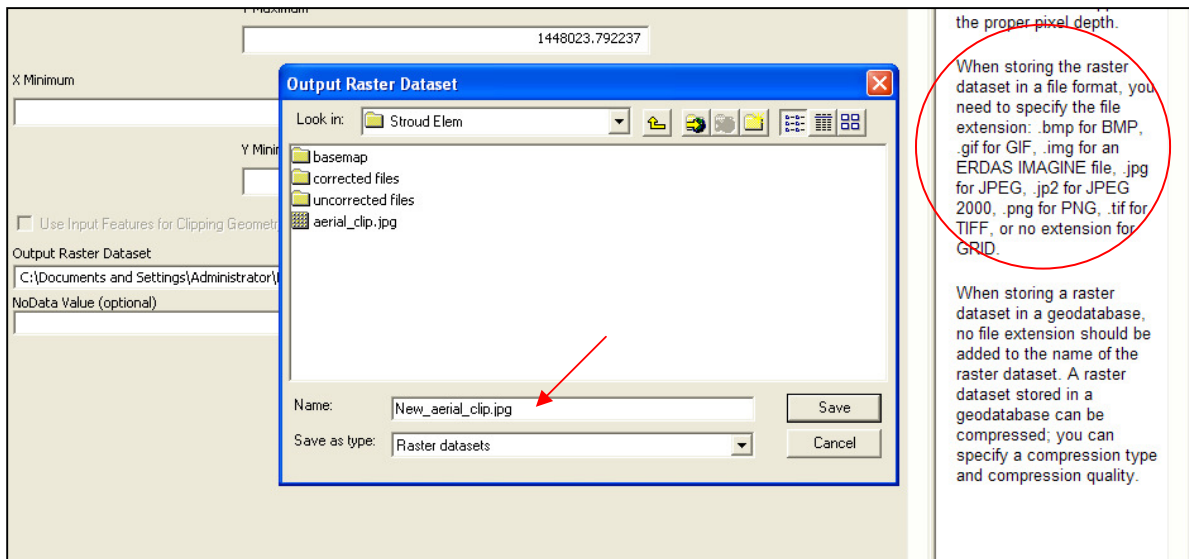
If the image is already georeferenced, the X and Y coordinates will be added by the computer.

If the image is not georeferenced or if you want to clip down a referenced image, input the X and Y coordinates you found in step 1.

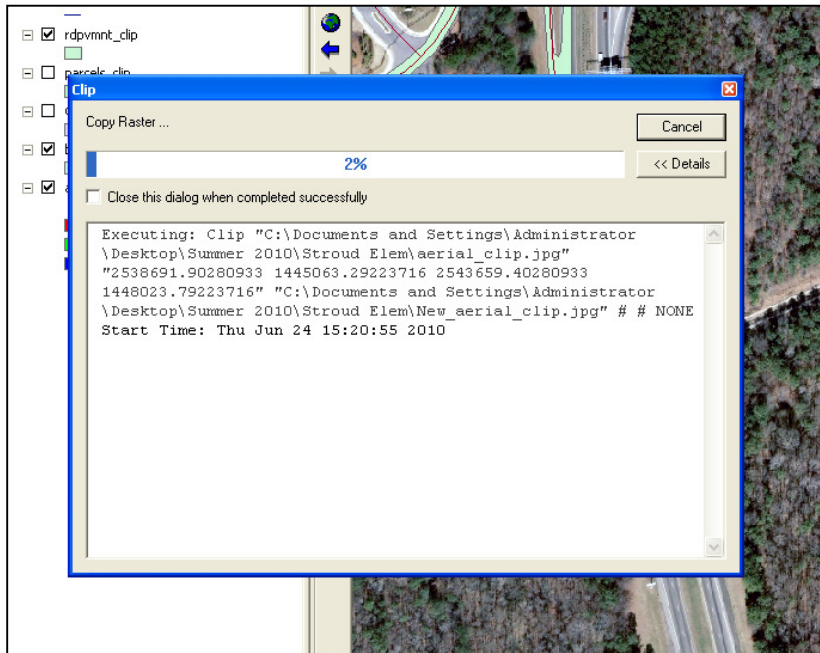


5. In the “Output Raster Dataset” browse to and name your new file.

NOTE! When naming your file, you MUST type in the extension of the kind of image you want. (ie- New_aerial_clip.jpg OR New_aerial_clip.tif) You will not be able to select it from a dropdown. This is the part where you can convert your image to another file type. Click “Save”.



6. Click OK. Depending upon the size of your source image, this process may take a while.



Your new image will be added as a layer on your map.