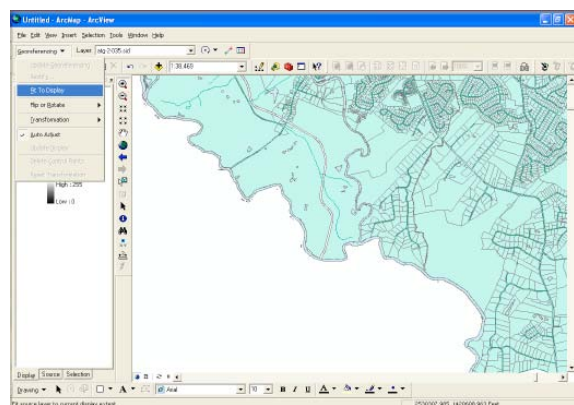
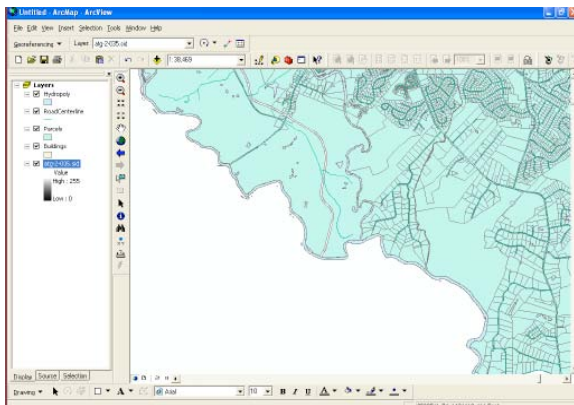
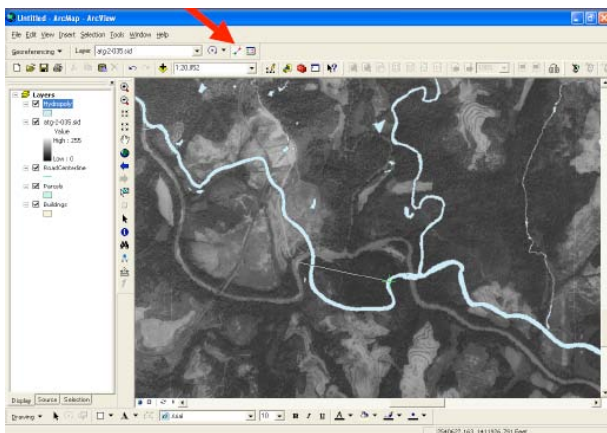




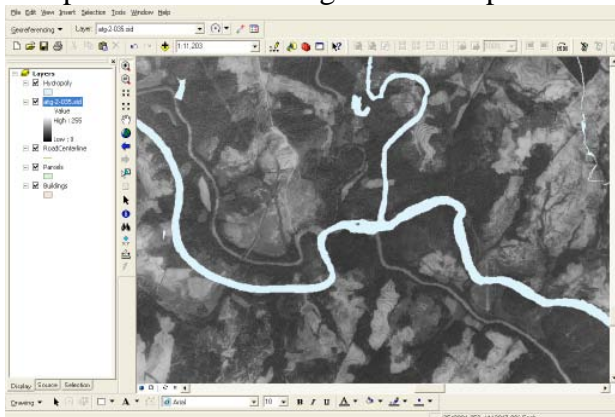
3. Zoom to the area on your base map where the image should be placed. Highlight the layer in the layer management window, then click on the Georeferencing drop down menu and click “Fit to Display.”



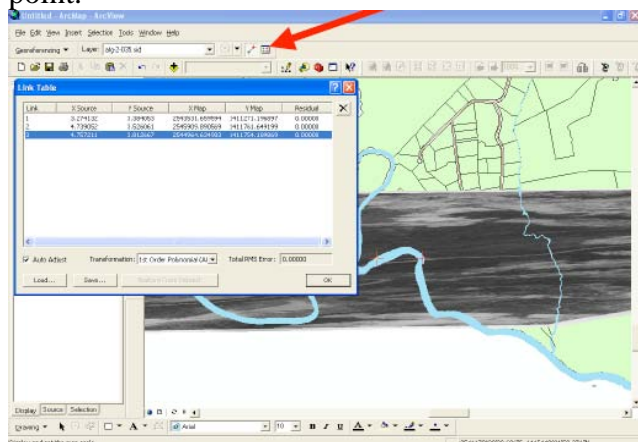
4. After selecting control points, zoom into one of them so you can place your mouse as accurately as possible on the point. Click on the “Add control points” button. Using the control points tool, pick a “common point” on the photo, then select the same point on the existing layer. The green point is at what’s referred to as the ‘source.’ The red point is at what’s referred to as the ‘target.’



The photo moves and begins to line up with the existing layers.



If you screw up and the map becomes distorted then click on the “Link Table” and delete the control point.



5. When you have finished entering control point data, click on OK to close the link table.

6. Select Georeferencing>Update Display to view your results. Now you should be able to overlay other data (provided those data use the same coordinate system). This example below shows that data for states and major roads overlay with the image. Continue to adjust until you are as close as possible.

7. When you are done, or as close as possible, Select Georeferencing> Update Georeferencing to save the changes you made. In the “Table of Contents (layer management box), highlight the image layer and right click >Save as a layer file.

