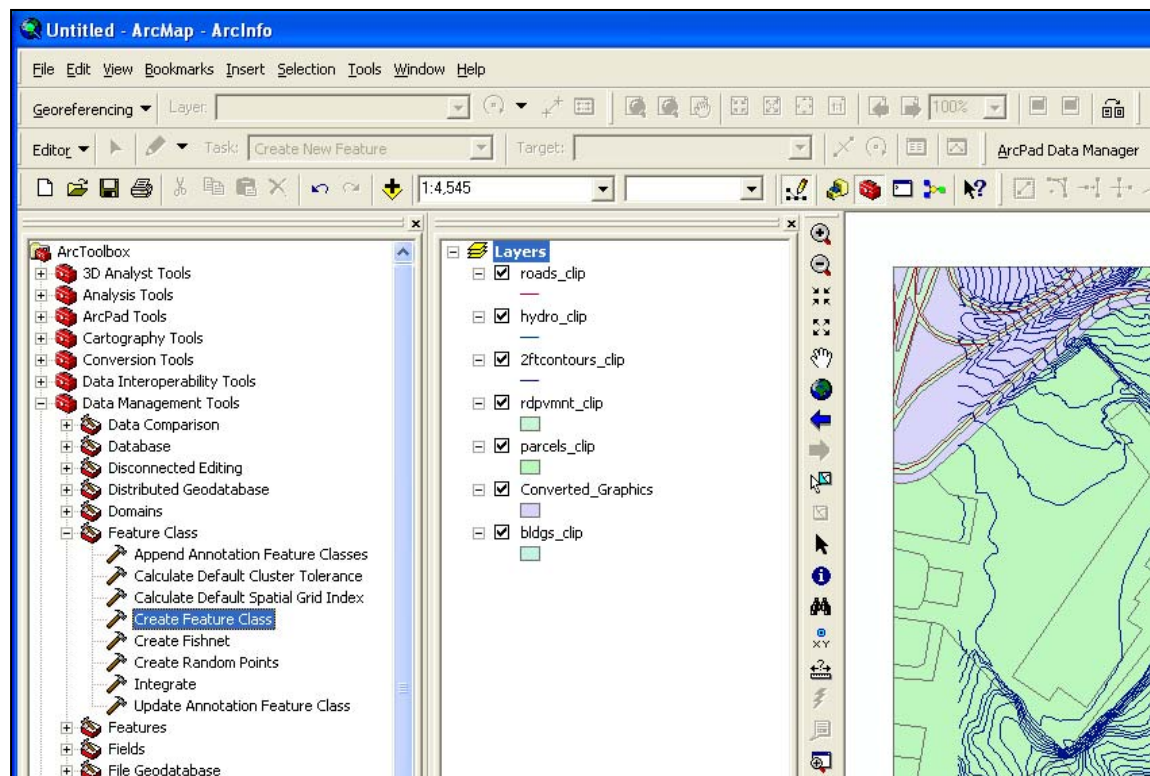
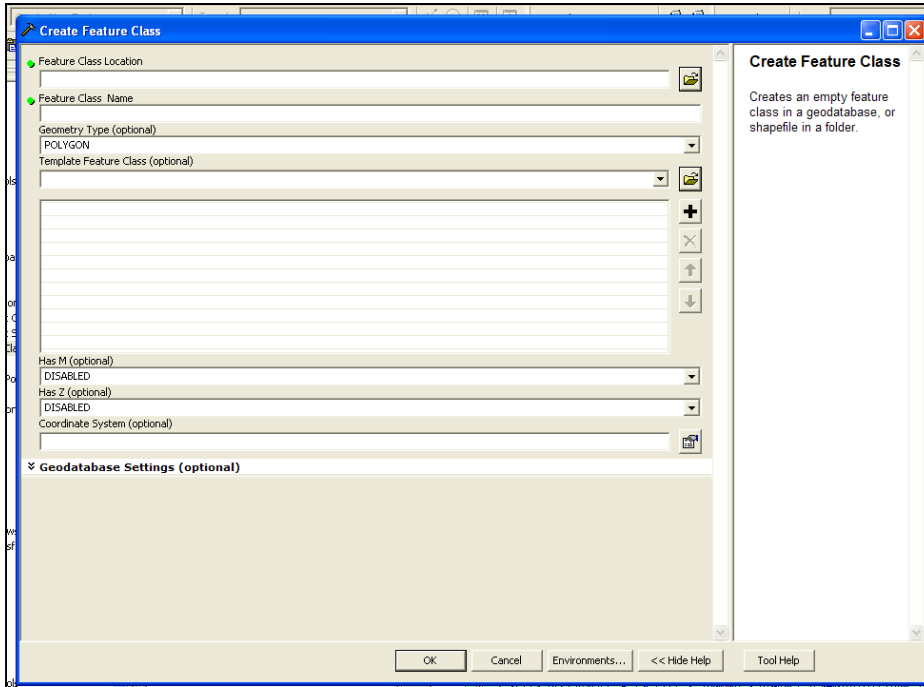


HOW TO CREATE A NEW, BLANK POINT SHAPEFILE

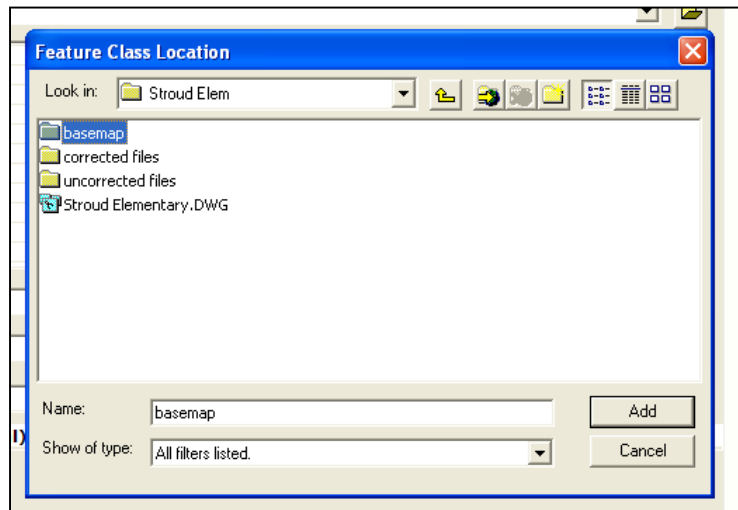
- OPEN ARCMAP WITH DESIRED BACKGROUND LAYERS
- OPEN ARC TOOLBOX
- CLICK THE “+” NEXT TO “Data Management Tools”.
- CLICK THE “+” NEXT TO “Feature Class”.
- DOUBLE CLICK “Create Feature Class”.



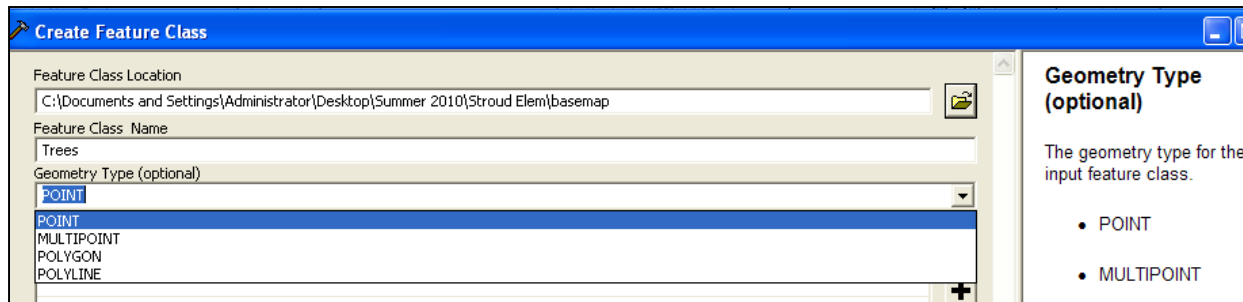
➤ DIALOGUE BOX “Create Feature Class” APPEARS:



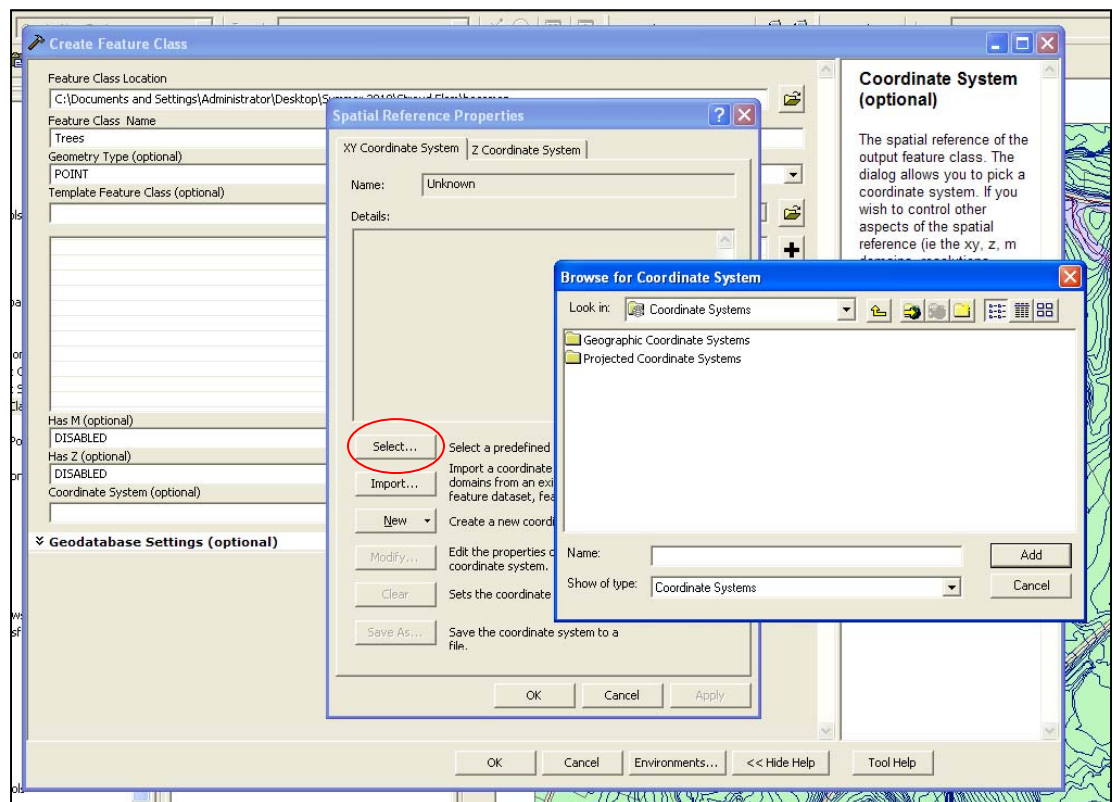
- “Feature Class Location”: CLICK THE YELLOW FOLDER ICON TO BROWSE TO DESIRED STORAGE LOCATION. SELECT A FOLDER. CLICK “Add”.



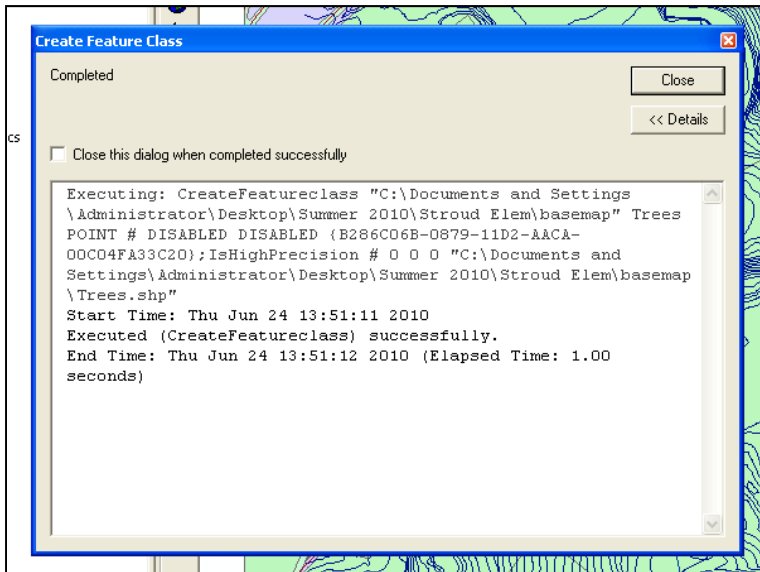
- “Feature Class Name”: CHOOSE A NAME FOR YOUR NEW SHAPEFILE (I.E. “Trees”)
- “Geometry Type”: CHOOSE “Point” FROM THE DROPDOWN MENU.



- “Coordinate System”: NAVIGATE TO YOUR PREFERRED PROJECTION SYSTEM TO ASSOCIATE WITH THIS FILE. OTHERWISE, IT WILL BE CREATED WITHOUT A PROJECTION.



- CLICK "OK".
- WHEN YOU GET THIS SCREEN, CLICK "Close".



- YOUR NEW FEATURE WILL AUTOMATICALLY BE ADDED AS A LAYER ON THE MAP.