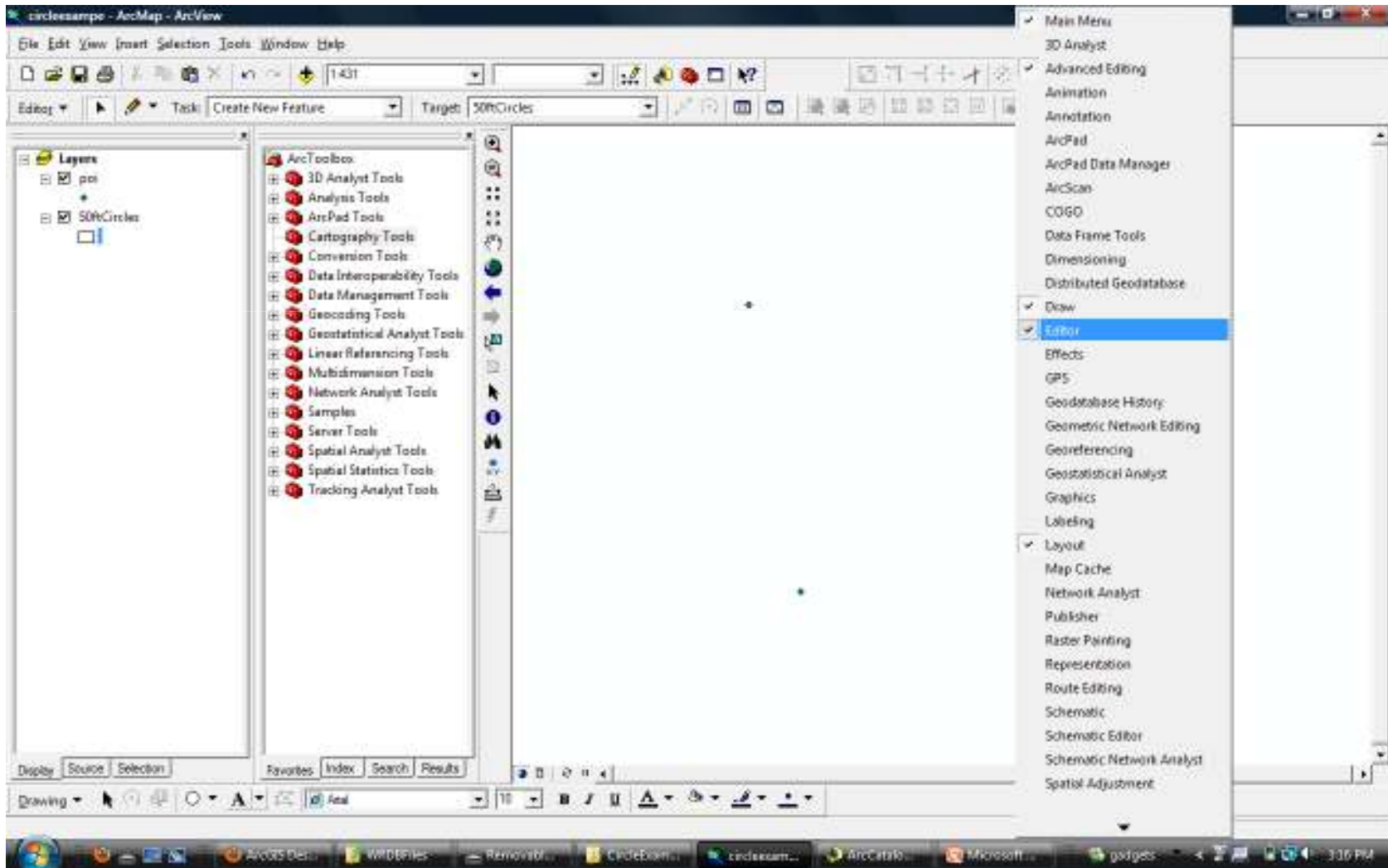


How to Create a New Polygon Shapefile and
Use the Editor Toolbar to Create a Circle with
a Specific Radius

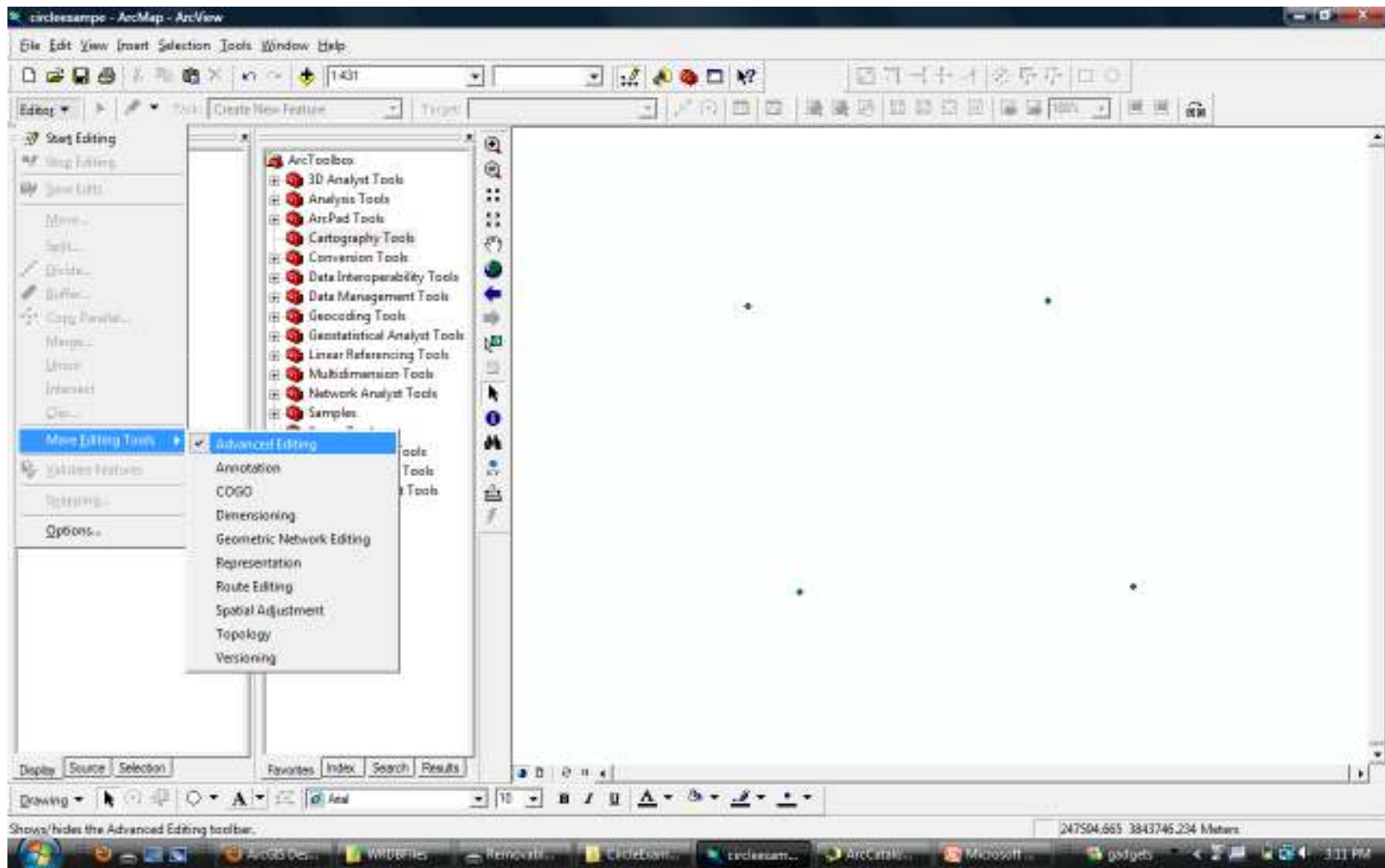
Create a New Shapefile:

- Open ArcCatalog and create a new polygon shapefile. (File -> New -> Shapefile)
- After you have named the file and selected the feature type to be “Polygon”, press edit and select or import the coordinate system (projection) to correspond with the coordinate system of your ArcMap file.
- In ArcMap: add this shapefile as a layer

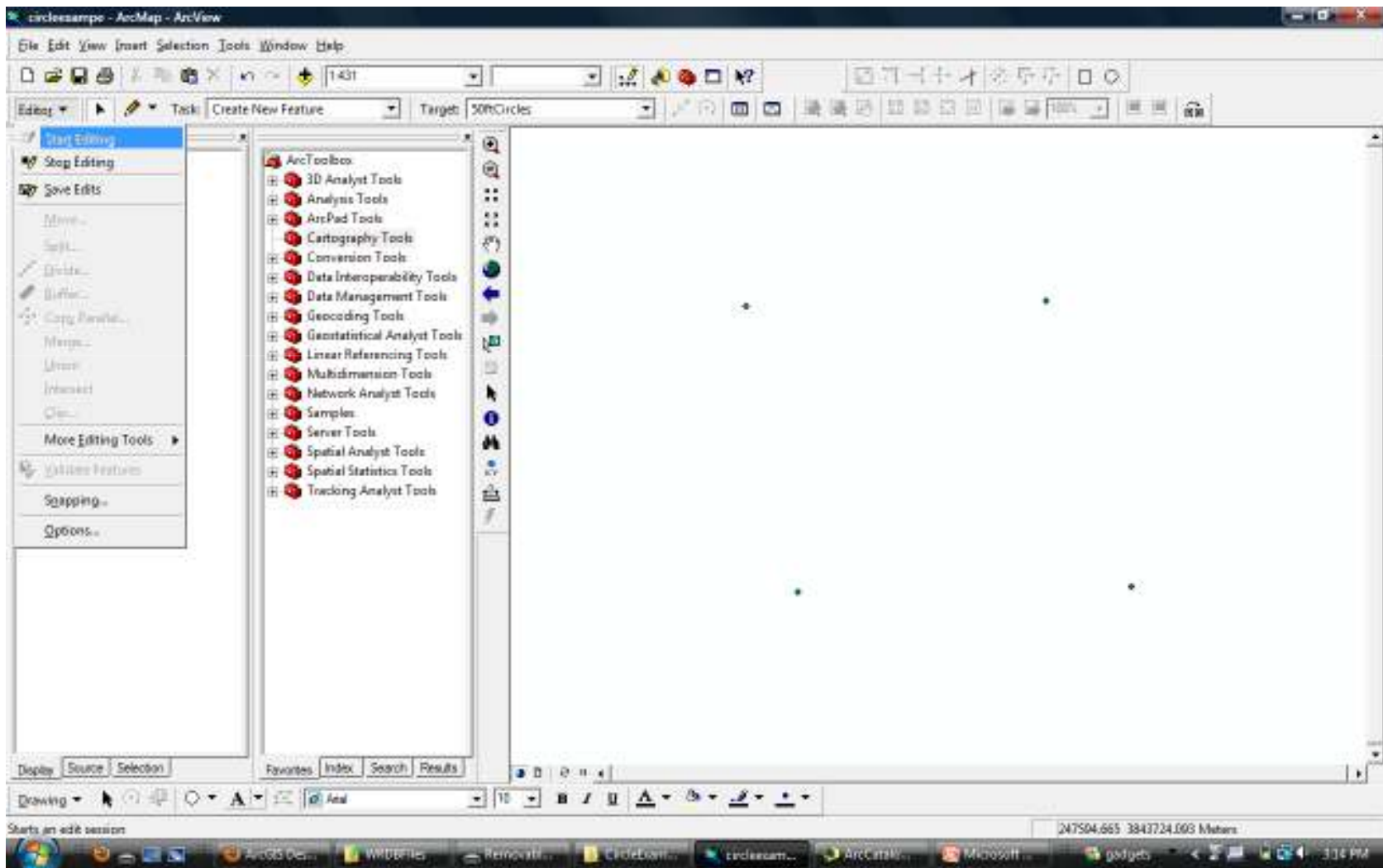
1. Turn on the Editor Toolbar (right-click on a blank area of toolbar)



2. Turn on the “Advanced Editing Toolbar” (On the editor toolbar)



3. Select: Editor -> Start Editing (On the editor toolbar)

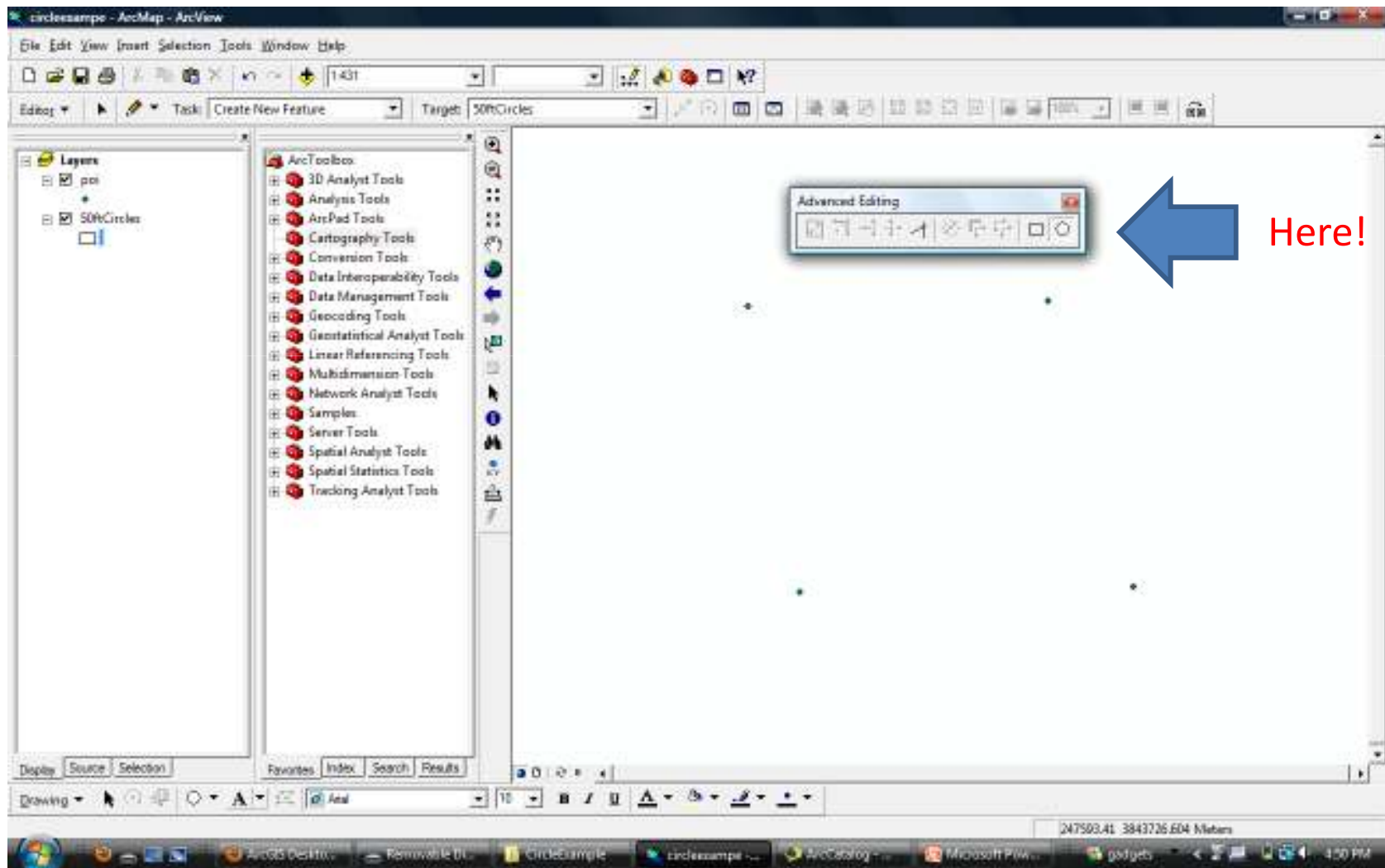


4. Set Task: “Create New Feature”

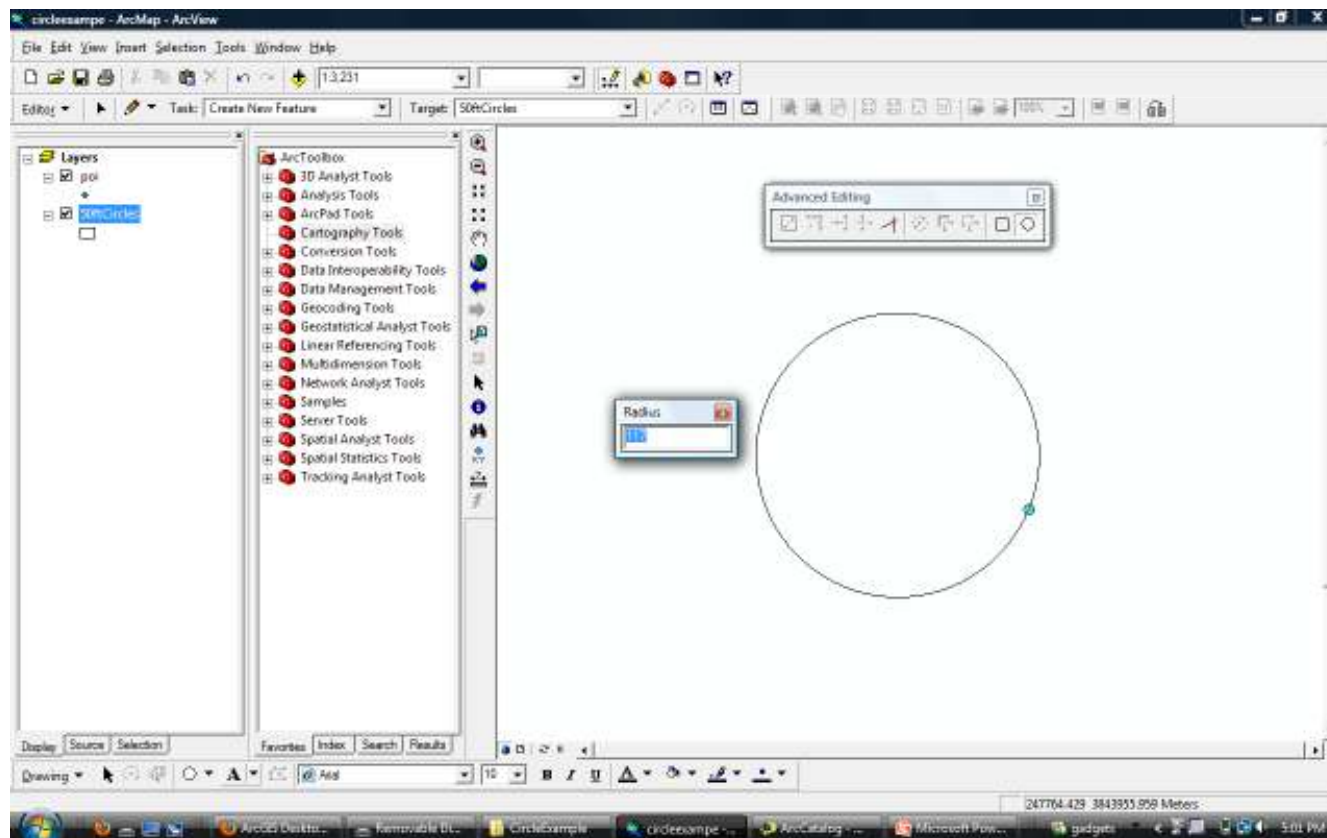


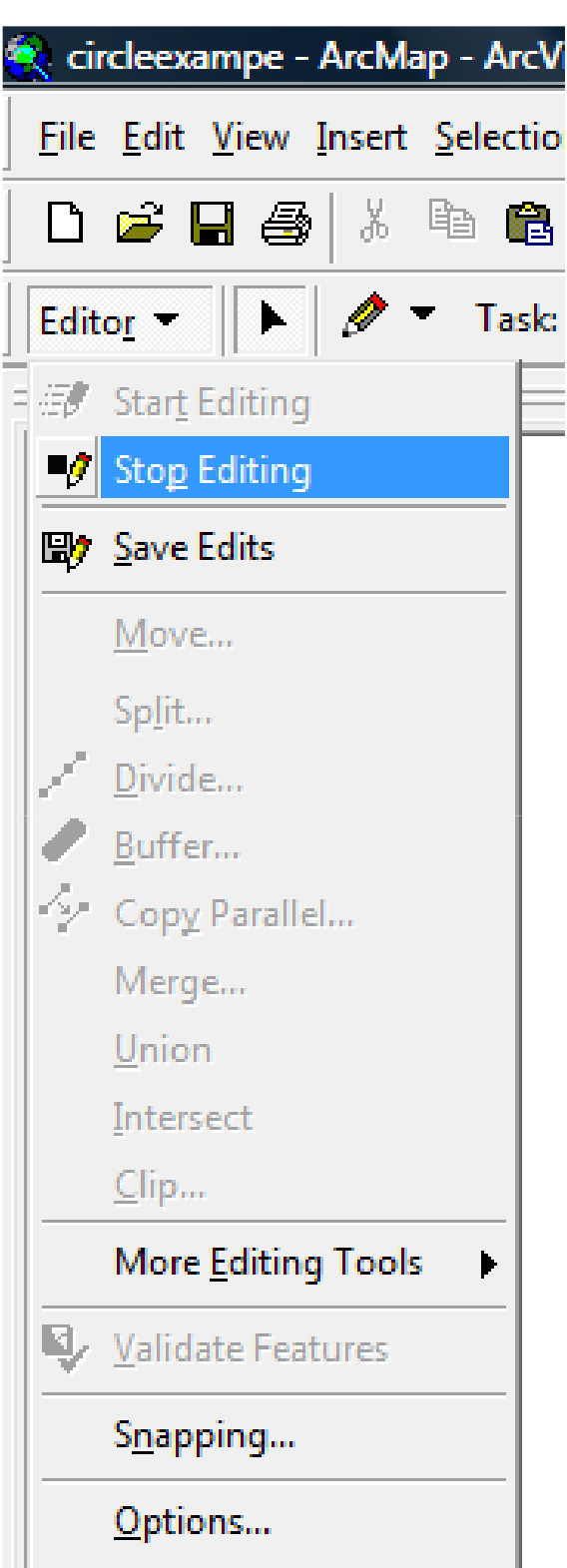
5. Set Target: the name of your recently created Polygon Shapefile

6. Click the circle button on the Advanced editing toolbar



7. Click the point on the screen where you want the center of the circle to be
8. Move the mouse slightly
9. Type 'r'
10. Enter the desired radius





11. Click Editor -> Save Edits
12. Click Editor -> Stop Editing
(editor toolbar)