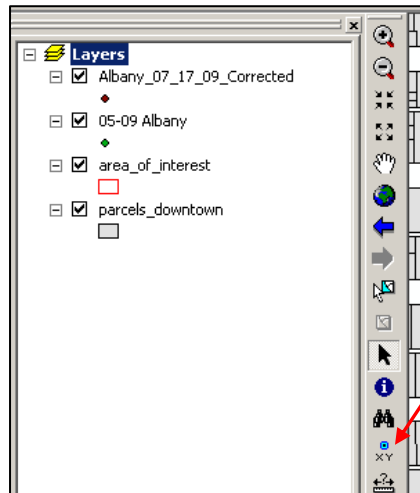
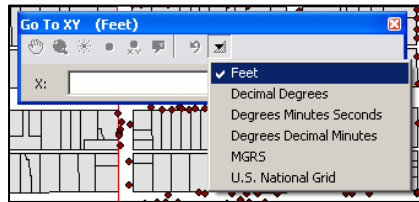


How to Create a Point in ArcMap from Latitude and Longitude Coordinates

1. Open ArcMap
2. Add data/shapefile
3. Right click on "Layers" in the Table of Contents
 - Select "Properties"
 - Select "Coordinate System" tab
 - Identify coordinate system and linear unit
 - Close

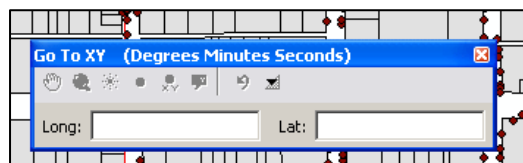


4. Select "x y" tool



Use the drop arrow to make sure units are set to the correct linear unit (Feet for State Plane maps)

5. Enter data for "x" (Longitude) and "y" (Latitude) into the toolbar



6. Tools for this window will highlight once you enter a number: to pan, zoom to, flash to, add point, add labeled point, or add a call out.