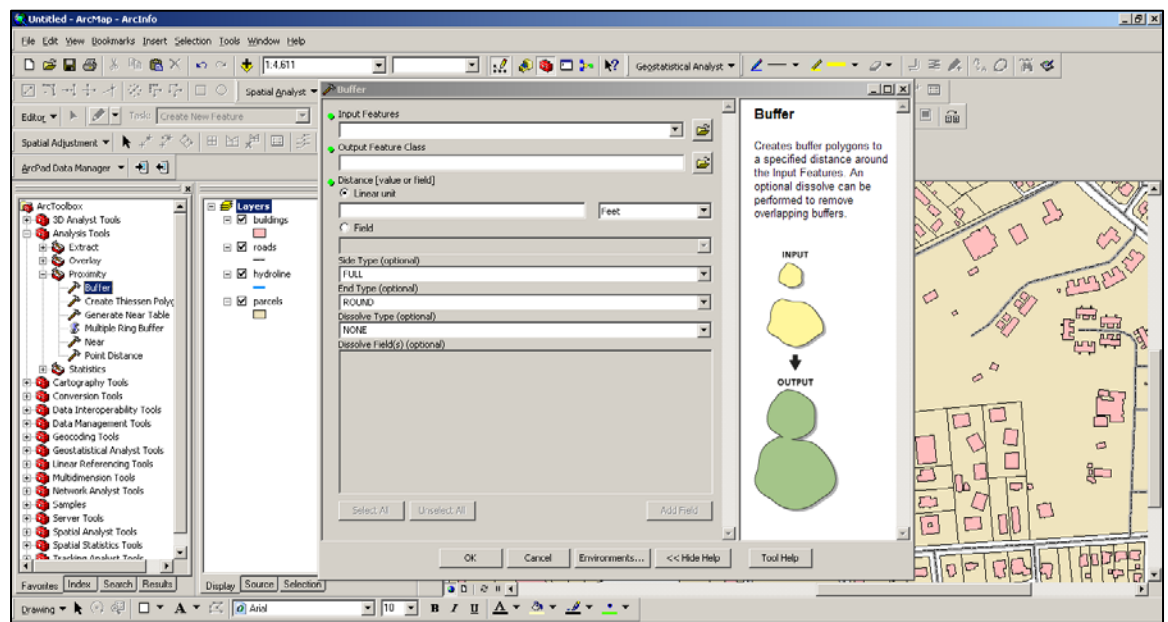


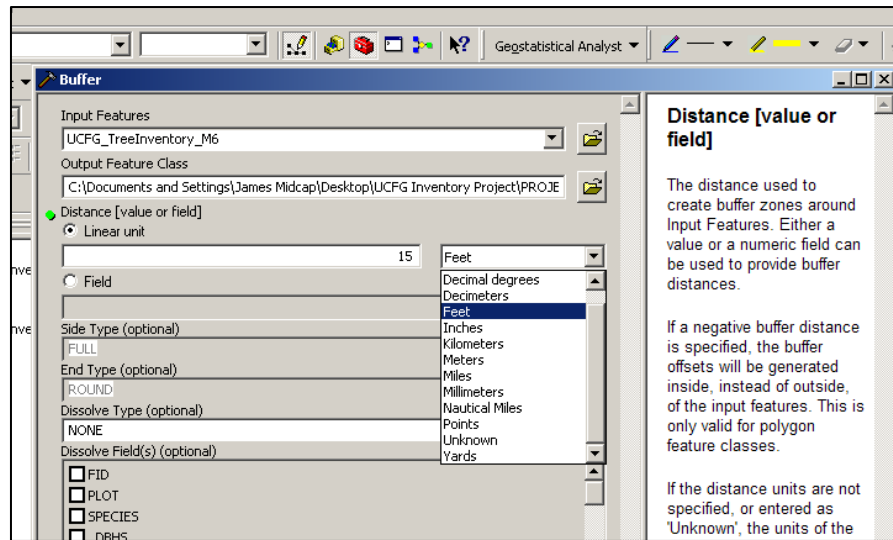
How to Create Buffers (Circles) Around a Point Layer

1. Open ArcMap on your computer.
2. Click on the **Arc Toolbox** button on the Standard toolbar.
3. Click on the “+” button beside **Analysis Tools**
4. Click on the “+” button beside **Proximity**.
5. Double-click on **Buffer**. The Buffer window with pop up.

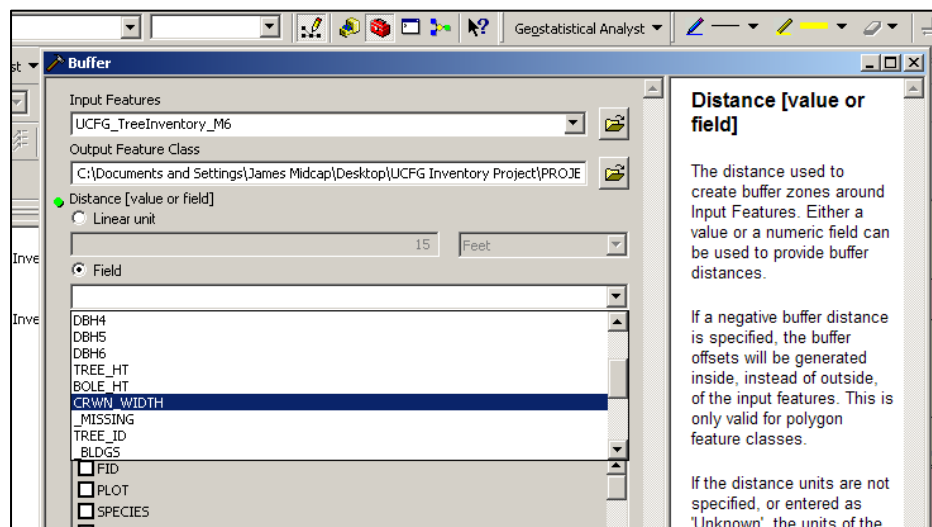


6. In the Input Features window, you can either:
Use the down arrow to choose an existing shapefile that you already have on your map. Double-click the layer desired.
OR
Use the look in button to search for shapefiles. Click **Add**.
7. In the Output Feature Class window, the shapefile that is to be buffered automatically pops up.
8. Under the Distance window, click the **Linear Unit** radio button. The window should become highlighted.
9. Type in the distance (numerical) to be buffered.

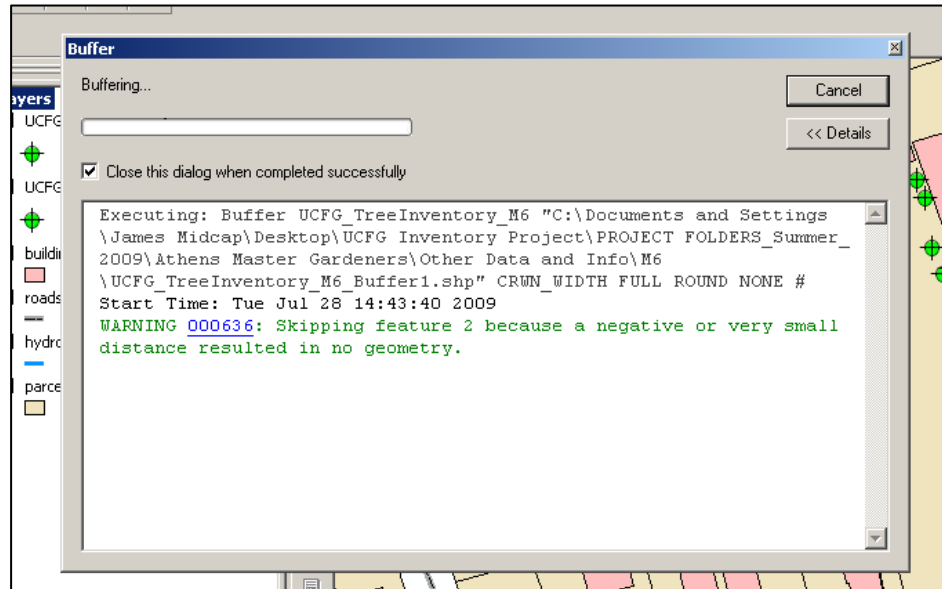
10. Use the drop down arrow to select the desired units of measurement (feet, meters, yards, etc.)



11. Click on **Field** radio button. The window should become highlighted. Click on the drop down arrow. The list will be the data columns for the attribute table associated with the layer. Select a data set that coincided with what you want buffered on that layer.
*In this example, the points represent trees. The best selection for analyzing a 15 foot buffer around the tree canopy is **crown_width**.*



12. Do not change any of the other fields.
Click **OK** at bottom of the Buffer window.



The above screen will pop up while ArcMap is running the Buffer. It will go away when it finishes, despite a few warnings.

13. Buffers should show up on the existing map as a new shapefile in the **Table of Contents** (list of layers on the left side of the map). You can change the color of the buffer layer to your liking.

